



IR-release: Q2 2013 operational overview

August 7, 2013

Disclaimer



IMPORTANT: You must read the following before continuing.

The below applies to the presentation (the "Presentation") following this important notice, and you are therefore advised to read this important notice carefully before reading, accessing or making any other use of this Presentation.

The information contained herein has been prepared for the use in this Presentation and has not been independently verified. Such information is confidential and is being provided to you solely for your information and may not be reproduced, retransmitted, further distributed to any other person or published, in whole or in part, for any purpose. ALROSA relies on information obtained from sources believed to be reliable but does not guarantee its accuracy or completeness. None of ALROSA or any of its affiliates or controlling shareholders intends or otherwise is under any obligation to update or keep current the information (or to correct any inaccuracy) contained herein.

This Presentation contains statements about future events and expectations that are forward-looking statements. Any statement herein that is not a statement of historical fact is a forward-looking statement that involves known and unknown risks, uncertainties and other factors which may cause ALROSA's actual results, performance or achievements to be materially different from any future results, performance or achievements expressed or implied by such forward-looking statements. Past performance should not be taken as an indication or guarantee of future results, and no representation or warranty, express or implied, is made regarding the future performance. ALROSA assumes no obligation to update, supplement or revise the forward-looking contained herein to reflect actual results, changes in assumptions or changes in factors affecting these statements. In no circumstances shall the distribution of this Presentation imply that no negative change may occur in the business of ALROSA after the date of such distribution, or any date of amendment and/or addition hereto.

The diamond resources and reserves estimates provided in this Presentation have been prepared and presented in accordance with the standards and classifications of the JORC Code (the Australasian Code for Reporting of Exploration Results, Mineral Resources and Ore Reserves as promulgated by the Australasian Joint Ore Reserves Committee), which differ in significant respects from the standards and classifications applicable to the disclosure of mineral resources and reserves under the laws and regulations of certain other jurisdictions, including the regulations of the U.S. Securities Exchange Commission (the "SEC") with respect to registration statements and other documents filed with the SEC. Among other things, in accordance with the JORC Code, this Presentation provides certain mineral resources estimates classified as "inferred", "indicated" or "measured", which differ in significant respects from "probable" and "proven" mineral reserves estimates and are not disclosed in certain jurisdictions, including in SEC filings. There can be significant uncertainty as to whether mineral resources can ever be feasibly and commercially mined. For further explanation of the JORC Code, see the JORC website at www.jorc.org.

Neither this Presentation, nor the fact of its distribution, does constitute or form part of and should not be construed as, an offer to sell or issue or the solicitation of an offer to buy or acquire any securities in any jurisdiction or an inducement to enter into any investment activity and nothing contained herein shall form the basis of any contract or commitment or investment decision whatsoever. The contents hereof should not be construed as investment, legal, tax, accounting or other advice, and investors and prospective investors in securities of any issuer mentioned herein are required to make their own independent investigation and appraisal of the business and financial condition of such issuer and the nature of the securities and consult their own advisers as to legal, financial, tax and other related matters.

No reliance may be placed for any purposes whatsoever on the information contained in this Presentation or on its completeness, accuracy or fairness. The information in this Presentation is subject to verification, completion and change. Accordingly, no representation or warranty or undertaking, express or implied, is made as to, and no reliance should be placed on, the accuracy, completeness or fairness of the information or opinions contained in this Presentation. None of ALROSA nor any of its shareholders, directors, officers or employees, affiliates, advisors, representatives nor any other person accepts any liability whatsoever for any loss howsoever arising from any use of this Presentation or its contents or otherwise arising in connection therewith.

This Presentation is not directed to, or intended for distribution to or use by, any person or entity that is a citizen or resident or located in any locality, state, country or other jurisdiction where such distribution, publication, availability or use would be contrary to law or regulation or which would require any registration or licensing within such jurisdiction. Persons in whose possession this Presentation and/or such information may come are required to inform themselves about and to observe such restrictions.

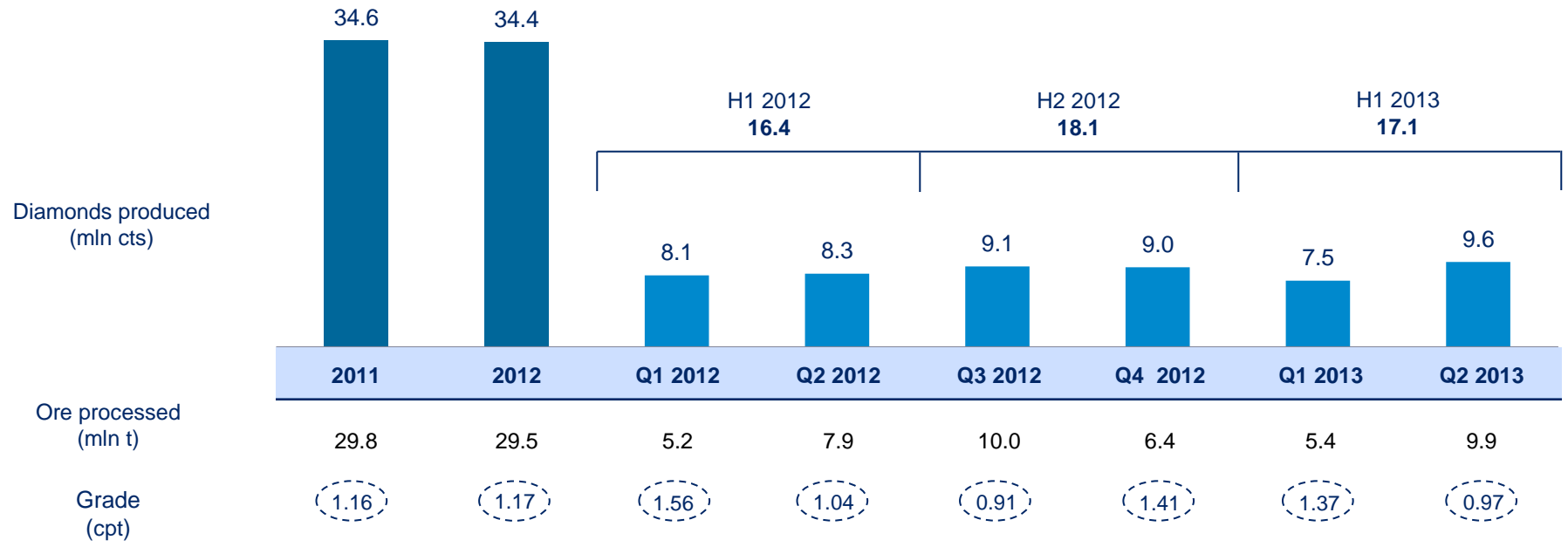
Some numerical figures included in this Presentation have been subject to rounding adjustments.

By reviewing this Presentation you acknowledge and agree to be bound by the foregoing.

Operational overview of ALROSA



Diamond production (mln cts)



- Q2 2013 diamond production totaled 9.6 mln cts, which is 16% higher compared with Q2 2012
- ALROSA's H1 2013 diamond production totaled 17.1 mln cts, which is 5% higher compared with H1 2012

- Growth drivers:
 - Aikhal underground mine reaching its target capacity
 - acquisition of OJSC Nizhne-Lenskoye
 - improved grade at Jubilee pipe

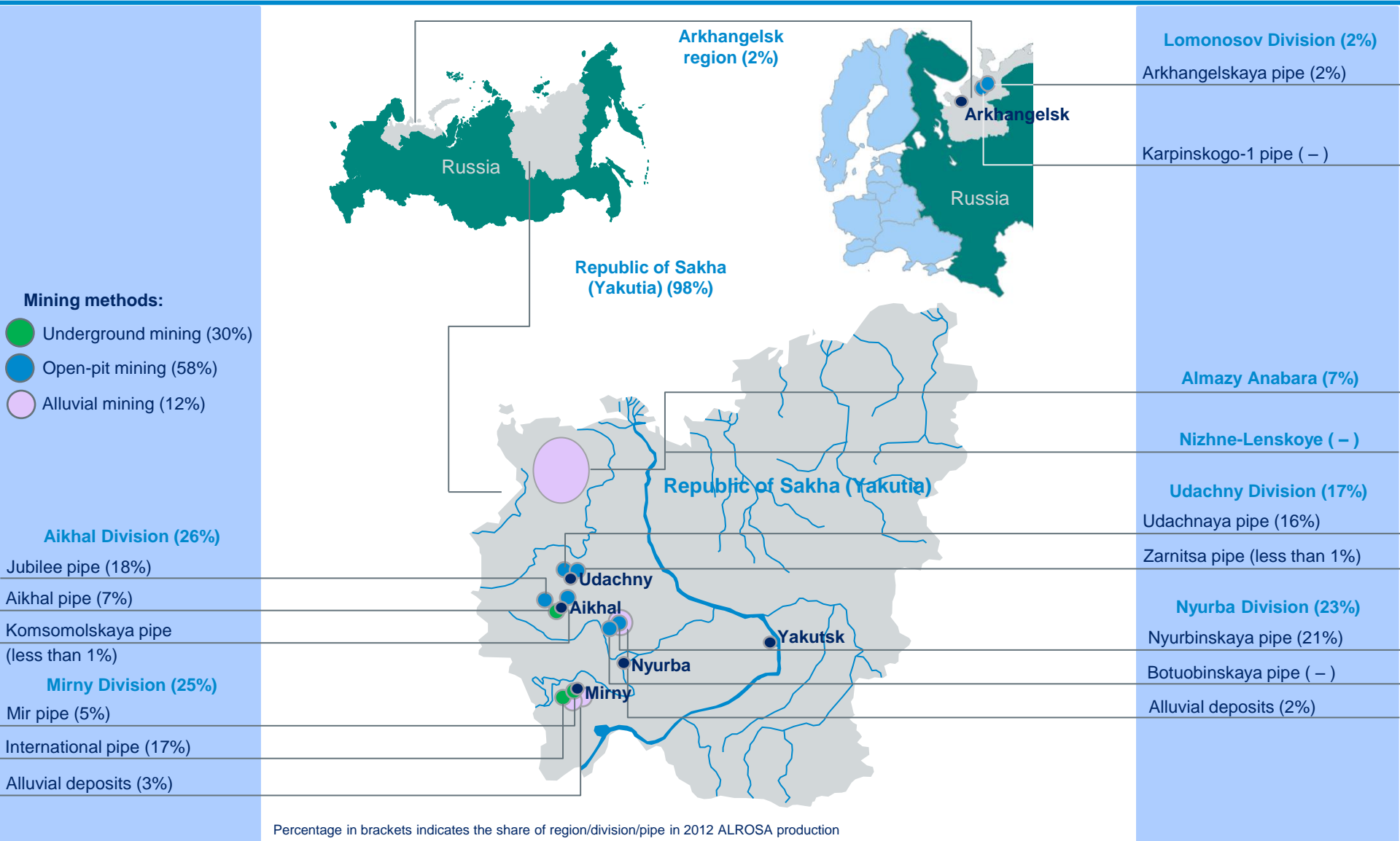
Diamond production



'000 cts	Q2 2013	Q2 2012	Q2 2013 vs. Q2 2012	H1 2013	H1 2012	H1 2013 vs. H1 2012
Aikhal Division	3,669	2,287	60%	5,653	3,447	64%
Jubilee pipe	2,232	1,669	34%	4,172	2,829	47%
Aikhal underground mine	1,435	546	2.6x	1,435	546	2.6x
Komsomolskaya pipe	2	72	(97%)	46	72	(36%)
Mirny Division	1,778	1,959	(9%)	3,570	4,892	(27%)
International underground mine	1,047	1,205	(13%)	2,129	3,552	(40%)
Mir underground mine	597	493	21%	1,068	997	7%
Alluvial and technogenic deposits	134	261	(49%)	373	343	9%
Udachny Division	1,383	1,610	(14%)	2,981	3,729	(20%)
Udachnaya pipe	1,330	1,568	(15%)	2,887	3,618	(20%)
Zarnitsa pipe	53	42	26%	95	111	(14%)
Nyurba Division	1,076	1,447	(26%)	3,054	3,203	(5%)
Nyurbinskaya pipe	801	1,351	(41%)	2,779	3,107	(11%)
Alluvial deposits	275	96	2.9x	275	96	2.9x
Lomonosov Division (OJSC Severalmaz (hereinafter Severalmaz))	142	148	(4%)	268	268	0%
Arkhangelskaya pipe	142	148	(4%)	268	268	0%
OJSC Almazny Anabara (hereinafter Almazny Anabara)	967	816	19%	967	816	19%
OJSC Nizhne-Lenskoye* (hereinafter Nizhne-Lenskoye)	612	294	-	612	294	-
Total	9,627	8,266	16%	17,105	16,354	5%

* In 2012 and earlier Nizhne-Lenskoye results are not included into ALROSA operational results

ALROSA's production footprint





AIKHAL DIVISION

Aikhal Division overview



Division structure

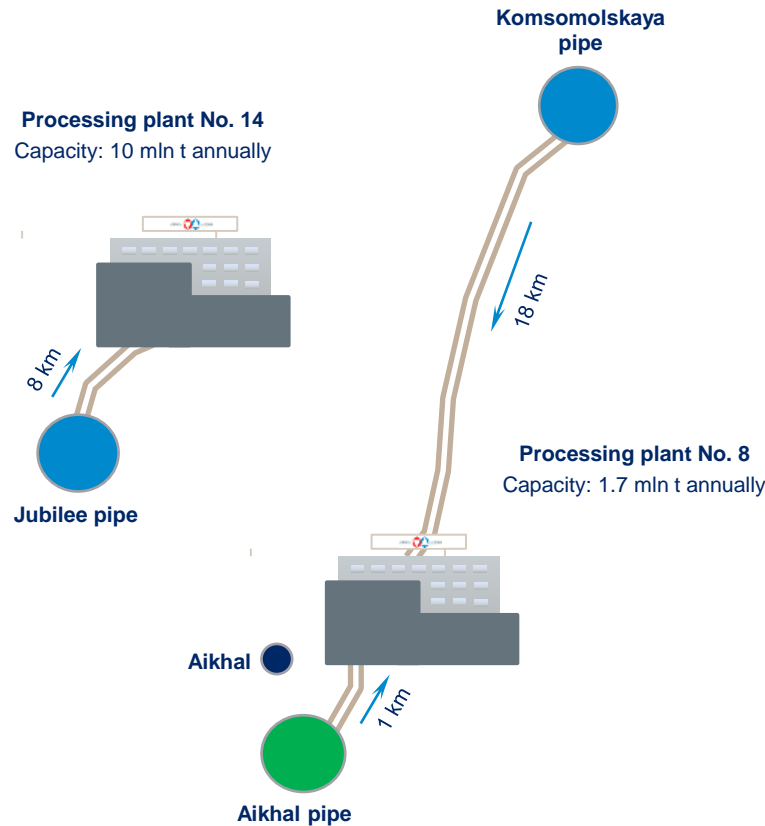
Processing plant No. 8

- ◊ Aikhal pipe
- ◊ Komsomolskaya pipe

Processing plant No. 14

- ◊ Jubilee pipe

Share in 2012 ALROSA production:
26%



- Mining methods:
- Underground mining
 - Open-pit mining

2012 Results

Ore processed ('000 t)	Diamonds produced ('000 cts)
10,526	8,945



Jubilee pipe

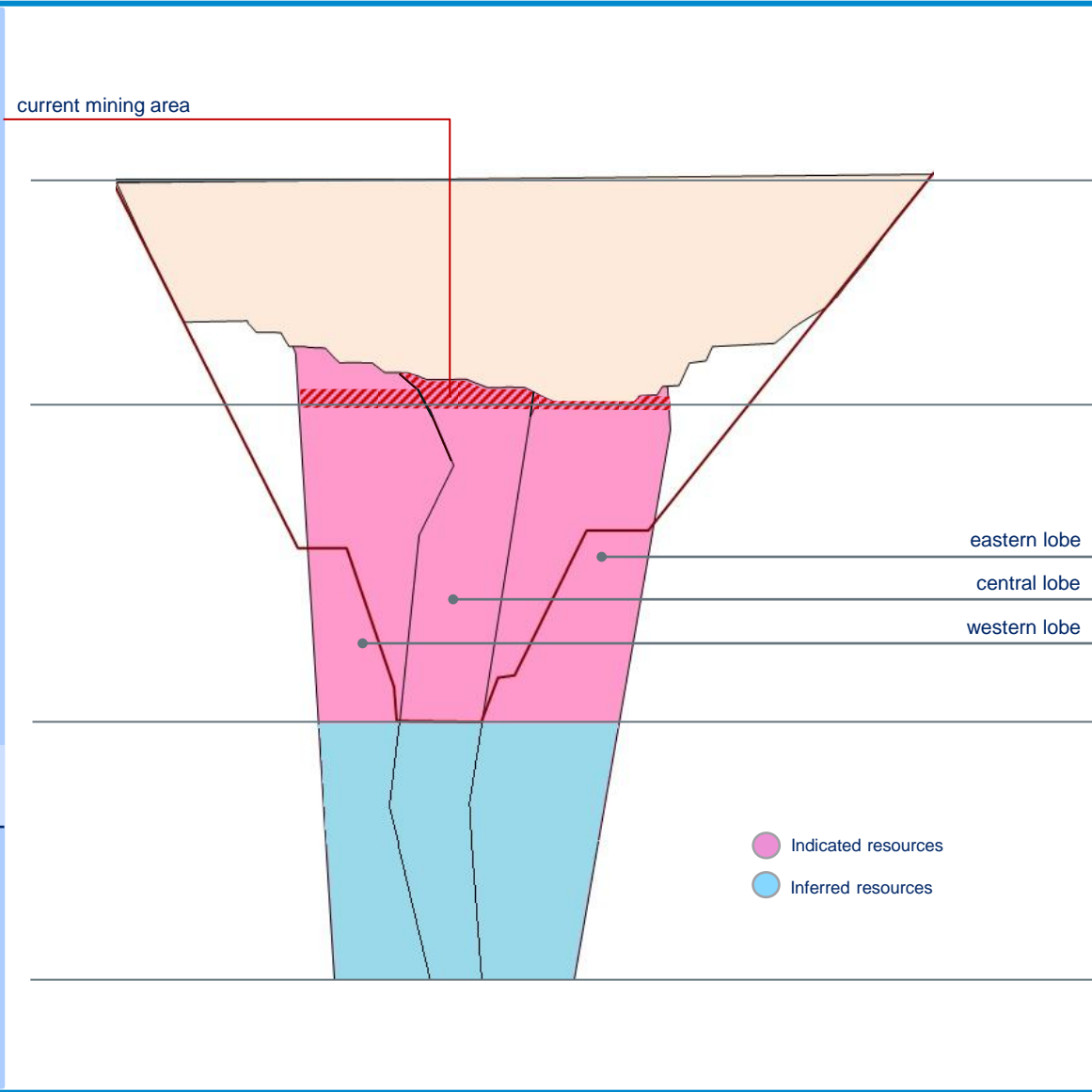
Mining method:
Open-pit mining

Commissioned:
1985

Current open pit depth:
315 m

Resources inclusive of reserves
(as of 01.01.2012)
according to JORC Code

Tonnage ('000 t)	Grade (cpt)	Contained diamonds ('000 cts)
	Indicated	
142,637	0.83	117,836
	Inferred	
65,977	0.62	40,594
Total		
208,614	0.76	158,430



0 m surface

-315 m current open pit depth

-720 m target open pit depth; boundary of indicated resources

-1,300 m boundary of inferred resources

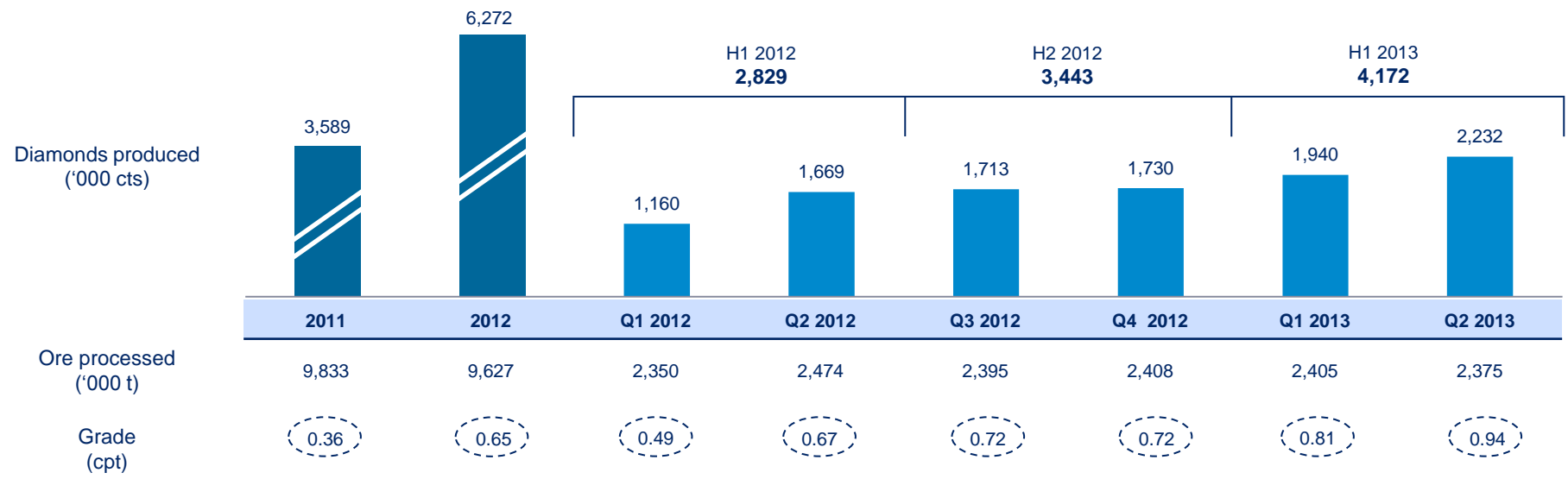


Jubilee pipe: production overview

Share in 2012 ALROSA production:
18%

Q2 2013 diamond production increased by 34% compared with Q2 2012

Diamond production increase in Q2 2013 was driven by mining of ore from the central lobe with higher grades





Aikhal pipe

Period of open-pit mining:
1961-1996

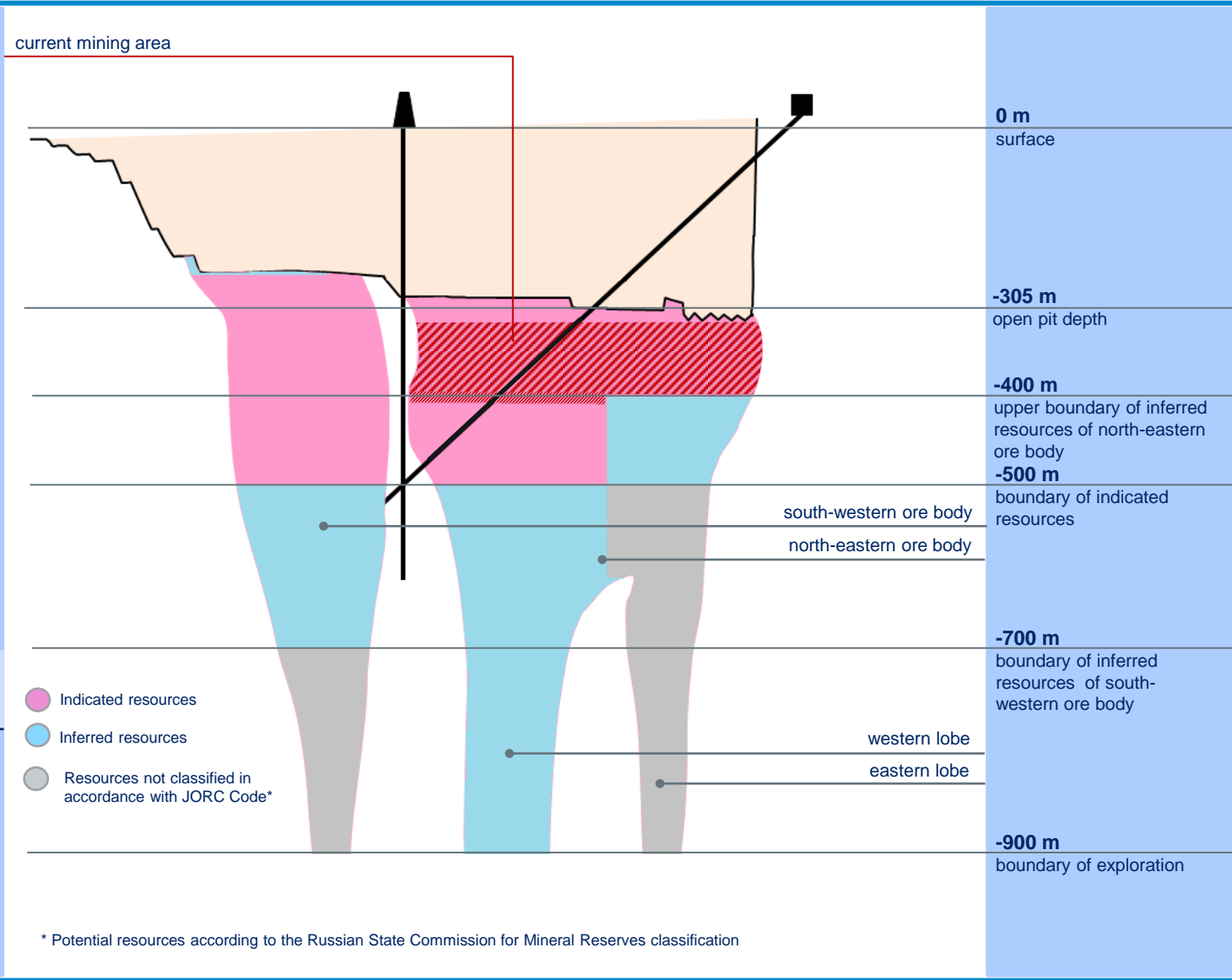
Open pit depth:
305 m

Mining method:
Underground mine

Start of underground mining operations:
2005

Resources inclusive of reserves
(as of 01.01.2012)
according to JORC Code

Tonnage ('000 t)	Grade (cpt)	Contained diamonds ('000 cts)
	Indicated	
5,812	4.41	25,619
	Inferred	
8,269	3.53	29,194
	Total	
14,081	3.89	54,813



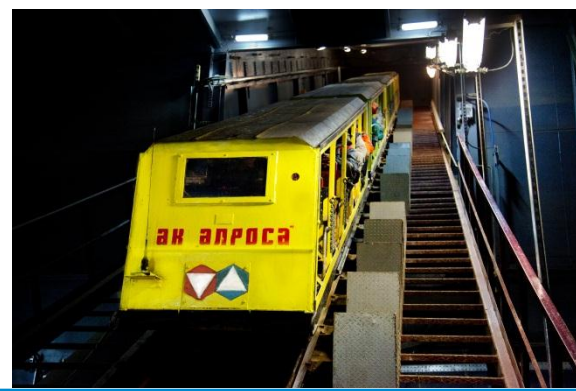
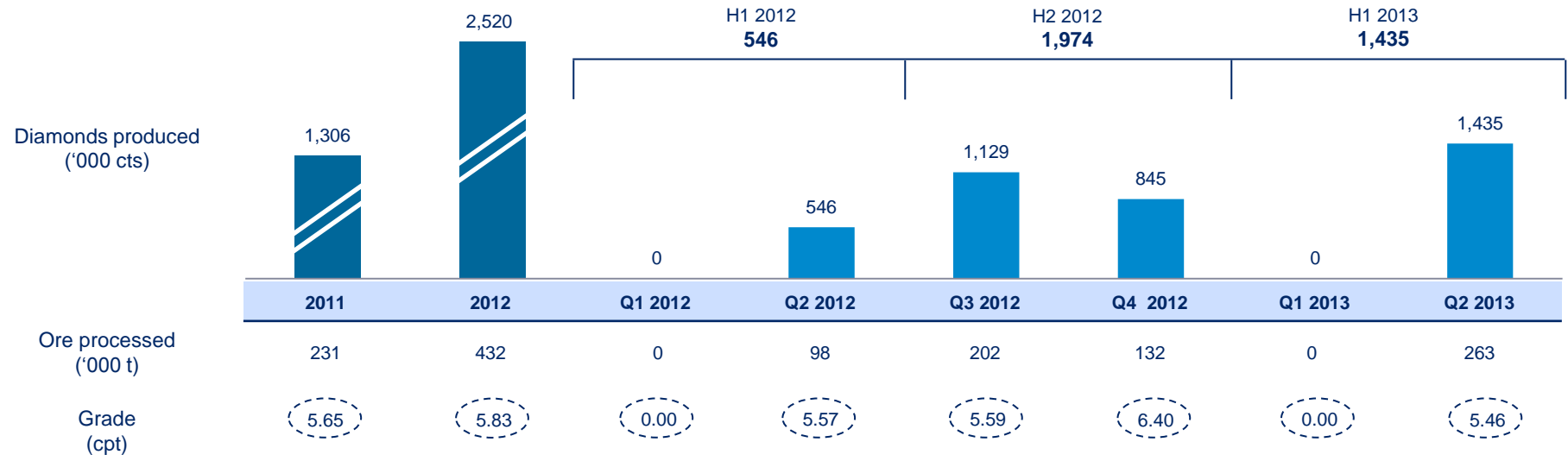


Aikhal pipe: production overview

Share in 2012 ALROSA production:
7%

Q2 2013 diamond production increased 2.6x compared with Q2 2012

Diamond production increased in Q2 2013 due to Aikhal underground mine reaching its target capacity





Komsomolskaya pipe

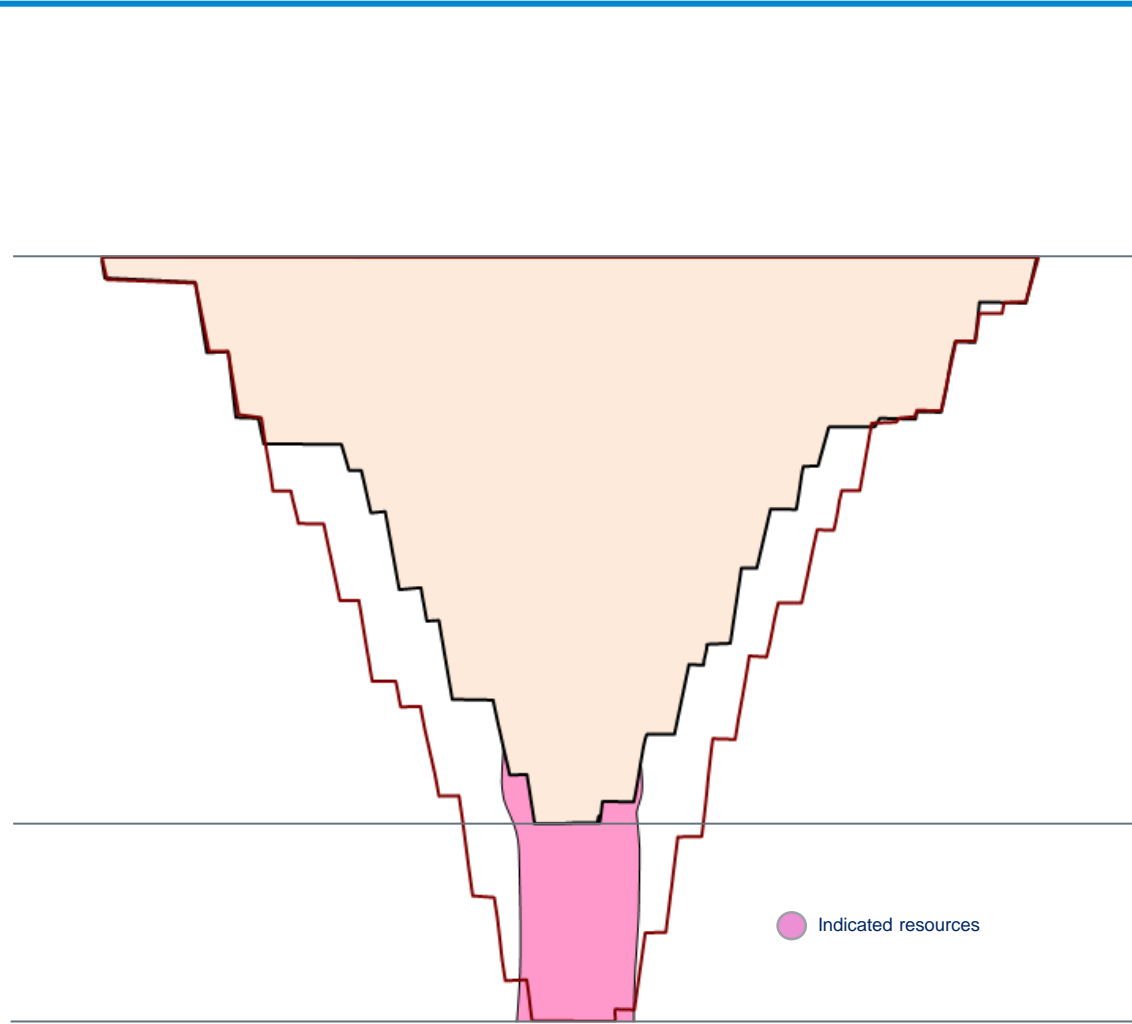
Mining method:
Open-pit mining

Commissioned:
2000

Current open pit depth:
335 m

Resources inclusive of reserves
(as of 01.01.2012)
according to JORC Code

Tonnage ('000 t)	Grade (cpt)	Contained diamonds ('000 cts)
	Indicated	
2,187	0.36	786
	Total	
2,187	0.36	786



0 m
surface

-335 m
current open pit depth

-470 m
target open pit depth;
boundary of indicated resources

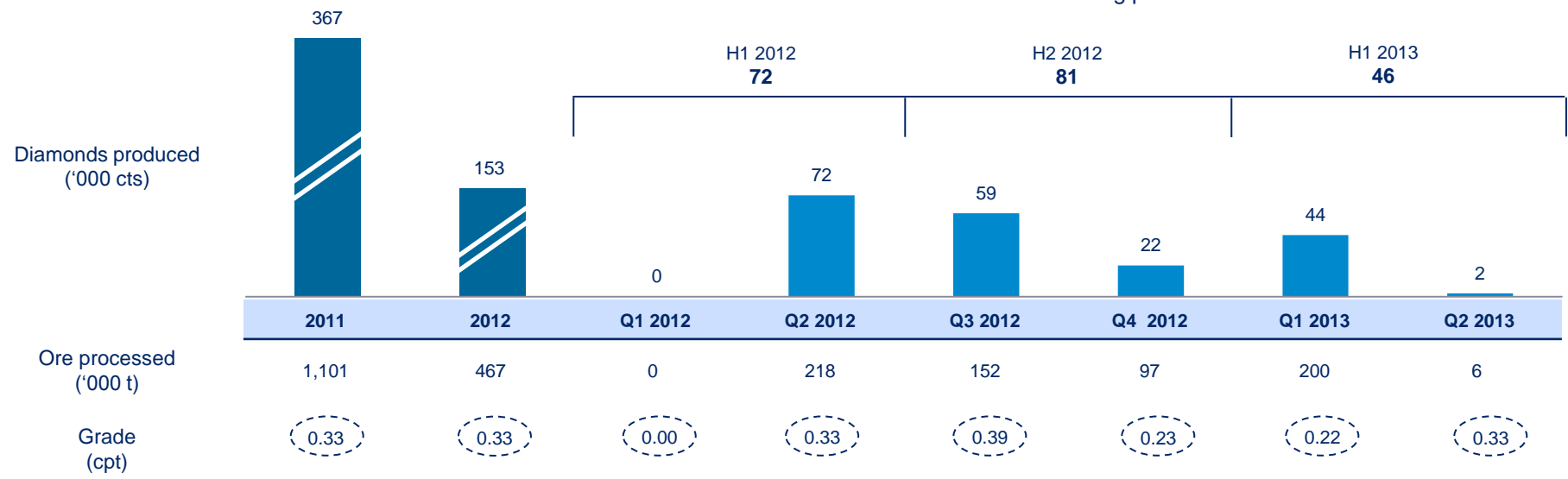


Komsomolskaya pipe: production overview

Share in 2012 ALROSA production:
less than 1%

Q2 2013 diamond production decreased by 97% compared with Q2 2012

- Diamond production decreased in Q2 2013 due to processing plant No. 8 loading by ore from Aikhal pipe
- Currently, open pit development activities are taking place





MIRNY DIVISION

Mirny Division overview

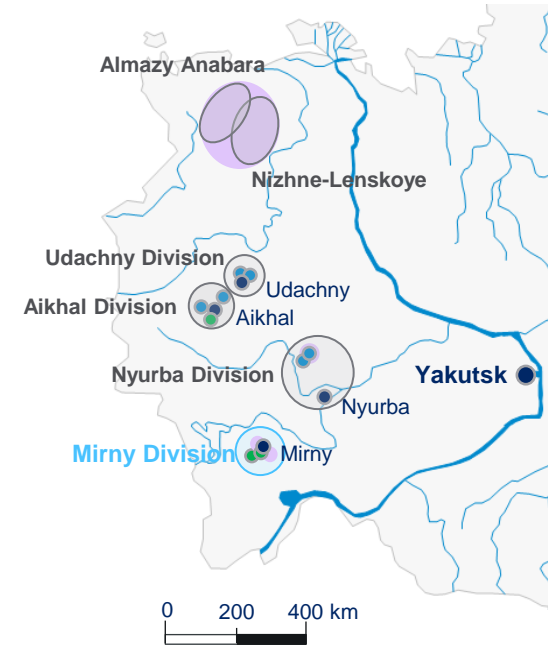
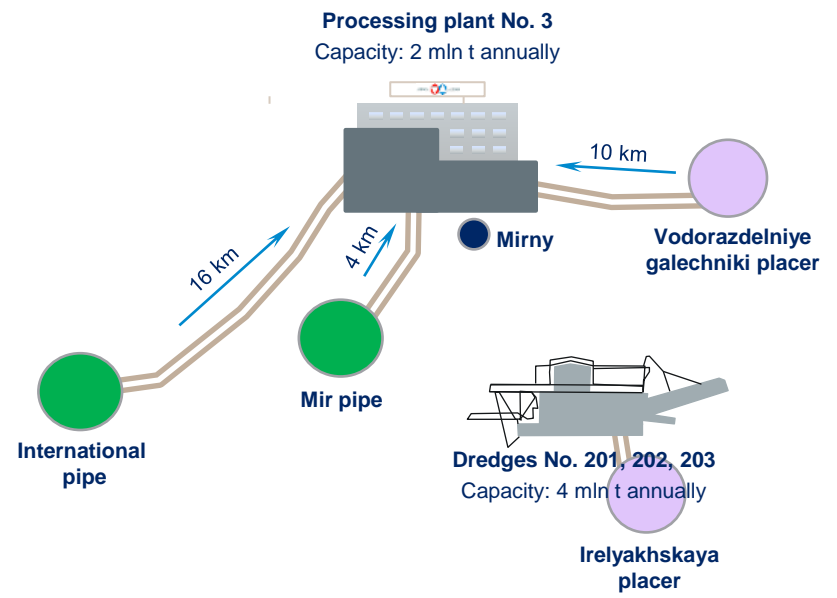


Division structure

- Processing plant No. 3**
- ◊ Mir pipe
 - ◊ International pipe
 - ◊ Vodorazdelniye galechniki placer
 - ◊ Processing plant No. 5 stock pile
- Dredges No. 201, 202, 203**
- ◊ Irelyakhskaya placer

Share in 2012 ALROSA production:
25%

2012 Results	
Ore processed at processing plant No.3 ('000 t)	2,161
Gravels processed at dredges No. 201, 202, 203 ('000 t)	3,209
Ore and gravels processed ('000 t)	5,370
Diamonds produced ('000 cts)	8,707



Mining methods:

- Underground mining
- Alluvial mining



International pipe

Period of open-pit mining:
1971-1981

Period of open pit development:
2005-2011

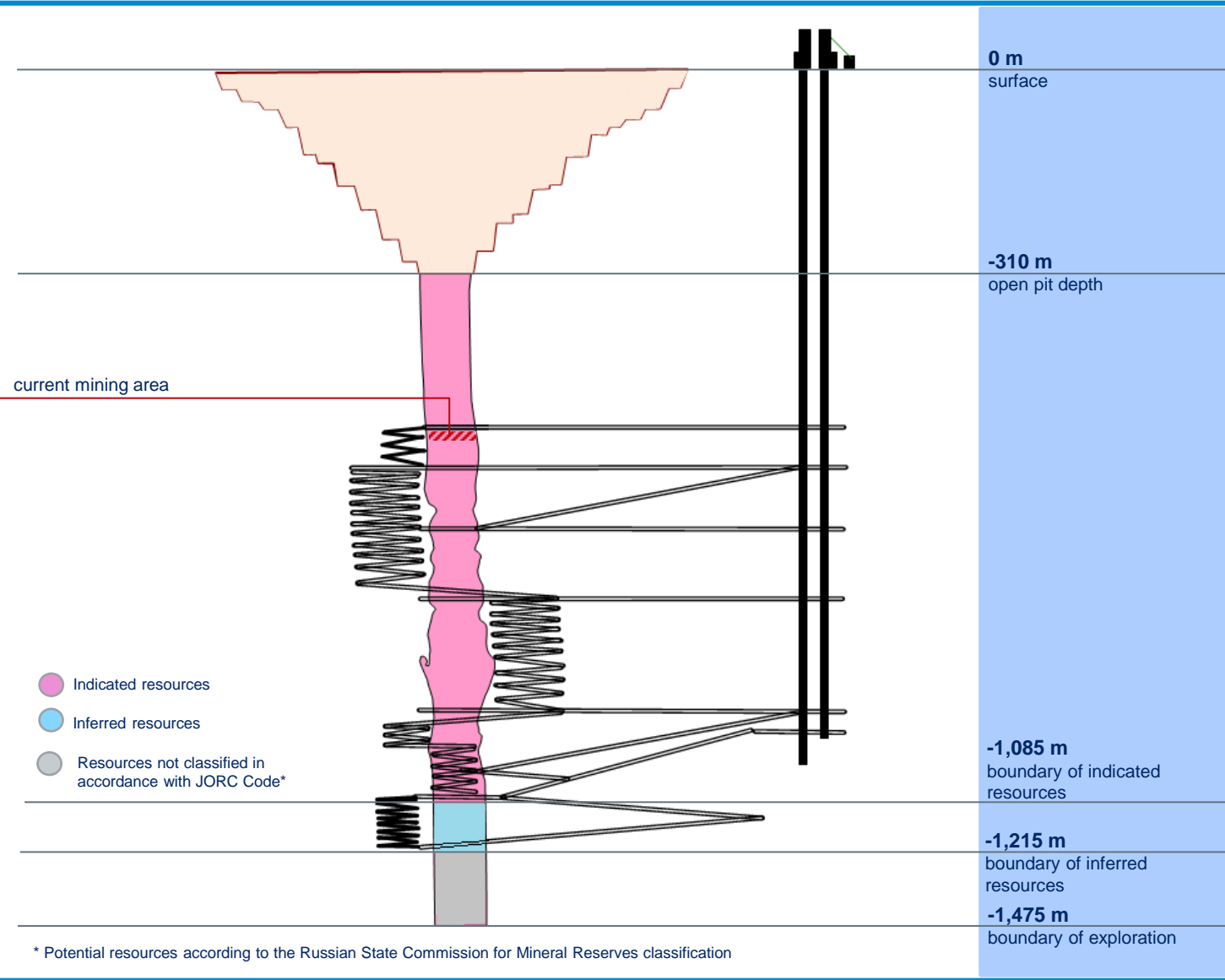
Open pit depth:
310 m

Mining method:
Underground mining

Start of underground mining operations:
1999

Resources inclusive of reserves
(as of 01.01.2012)
according to JORC Code

Tonnage ('000 t)	Grade (cpt)	Contained diamonds ('000 cts)
	Indicated	●
4,921	8.53	41,959
	Inferred	●
1,542	7.98	12,304
6,463	8.40	54,263



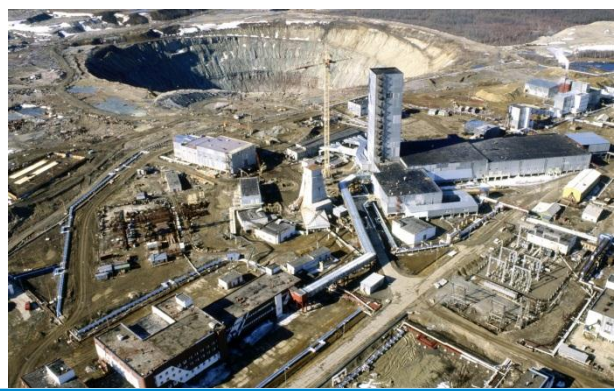
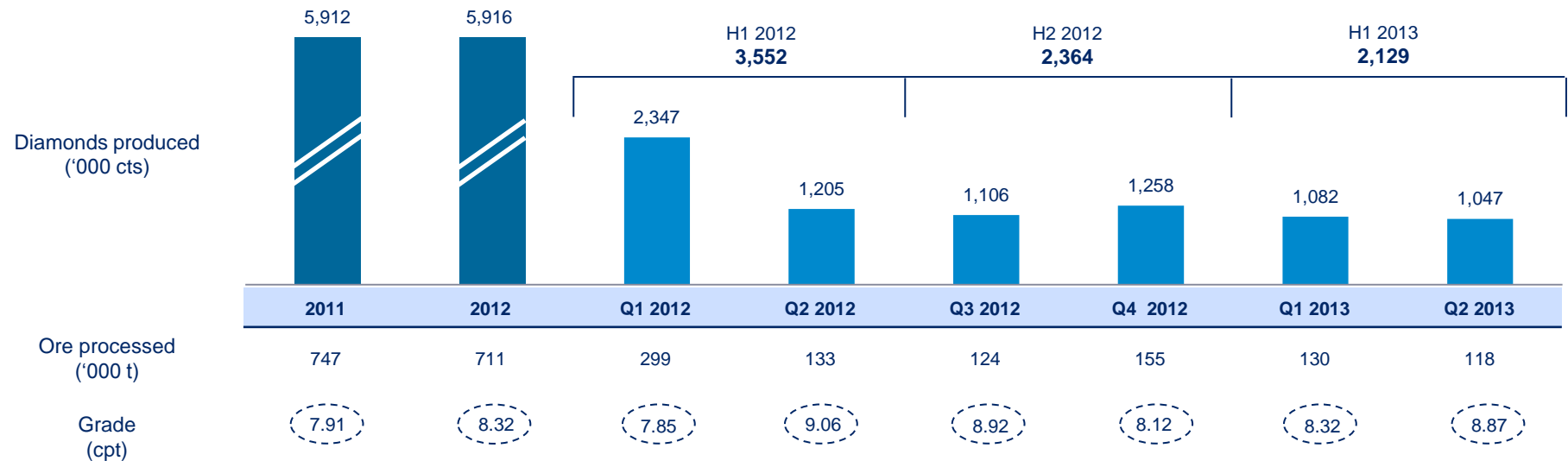


International pipe: production overview

Share in 2012 ALROSA production:
17%

Q2 2013 diamond production decreased by 13% compared with Q2 2012

Diamond production decreased in Q2 2013 due to planned decrease in ore processing caused by processing plant No. 3 treatment of ore from Mir pipe





Mir pipe

Period of open-pit mining:
1959-2001

Open pit depth:
525 m

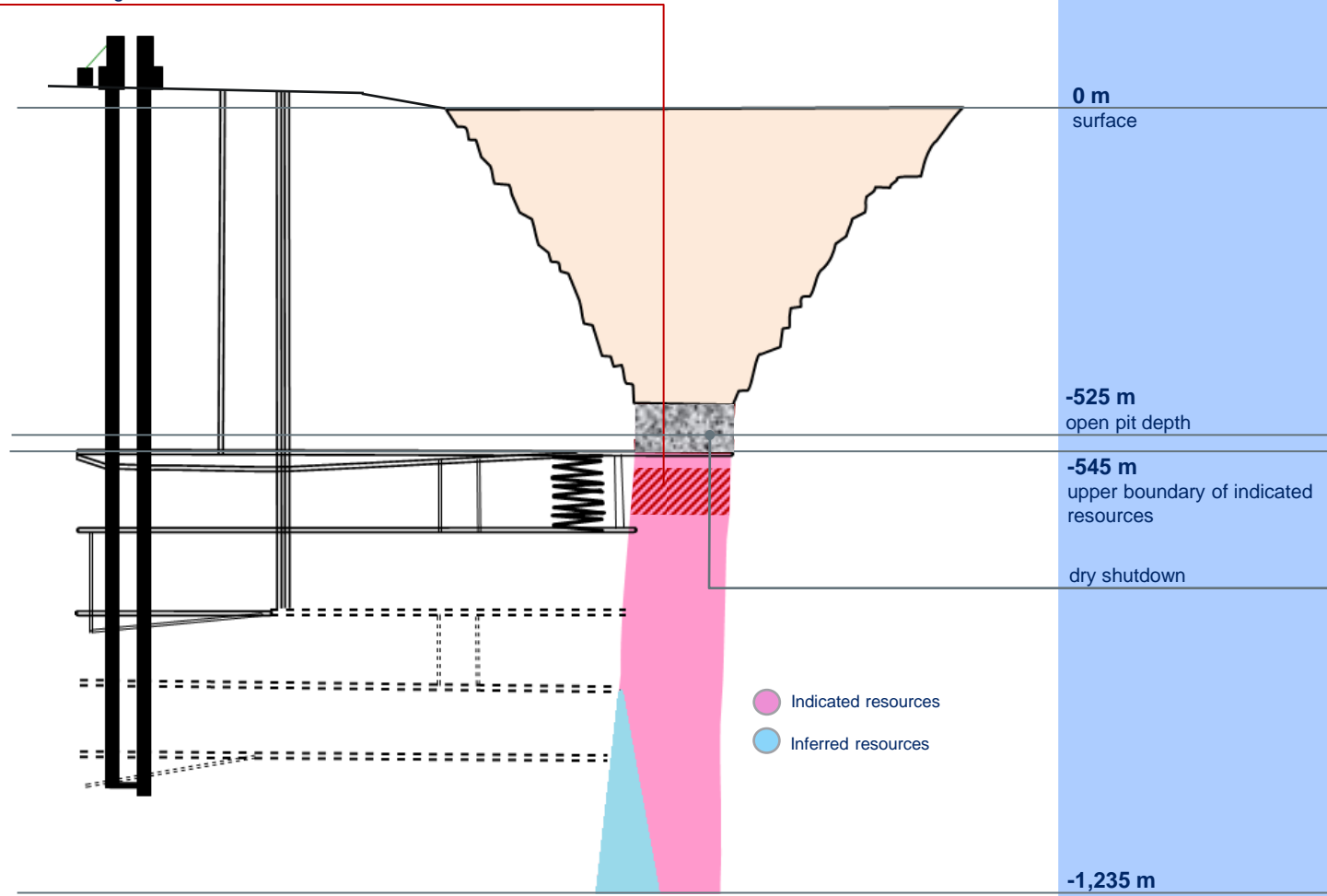
Mining method:
Underground mining

Start of underground mining operations:
2009

Resources inclusive of reserves
(as of 01.01.2012)
according to JORC Code

Tonnage ('000 t)	Grade (cpt)	Contained diamonds ('000 cts)
	Indicated	●
29,994	3.56	106,901
	Inferred	●
10,913	3.11	33,940
40,907	3.44	140,841

current mining area



0 m
surface

-525 m
open pit depth

-545 m
upper boundary of indicated resources

dry shutdown

-1,235 m
boundary of indicated and inferred resources

● Indicated resources
● Inferred resources

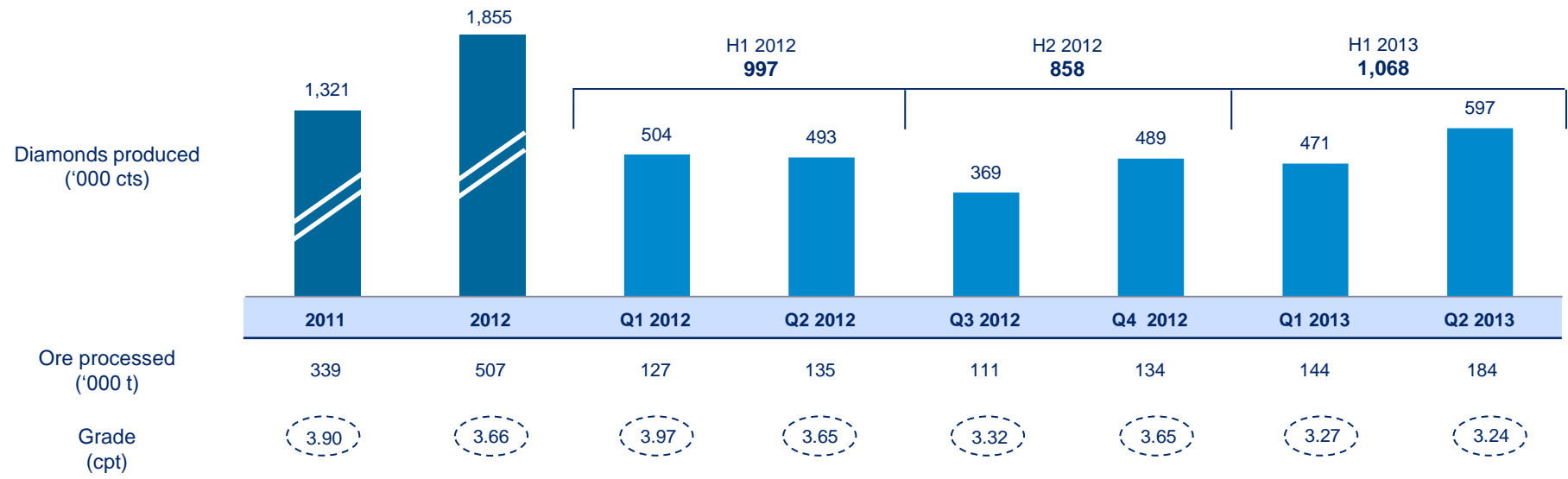


Mir pipe: production overview

Share in 2012 ALROSA production:
5%

Q2 2013 diamond production increased by 21% compared with Q2 2012

Diamond production increased in Q2 2013 due to underground mine's performance improvement





Alluvial and technogenic deposits

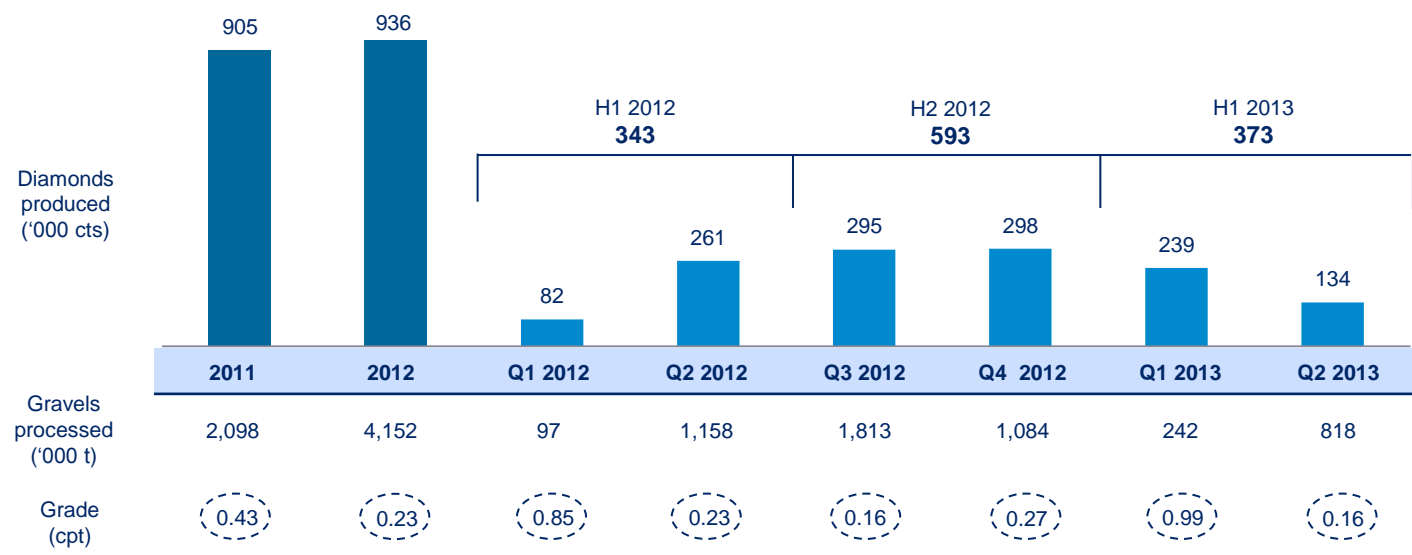
Deposits

- Vodorazdelniye galechniki placer
- Irelyakhskaya placer
- Processing plant No. 5 stock pile

Share in 2012 ALROSA production:
3%

Q2 2013 diamond production decreased by 49% compared with Q2 2012

Diamond production decreased in Q2 2013 due to planned increased treatment of ore from Mir and International pipes



2012 Results

Gravels processed ('000 t)	Grade (cpt)	Diamonds produced ('000 cts)
4,152	0.23	936

Resources and reserves of Mirny Division alluvial placers were not included into JORC Code valuation





UDACHNY DIVISION

Udachny Division overview

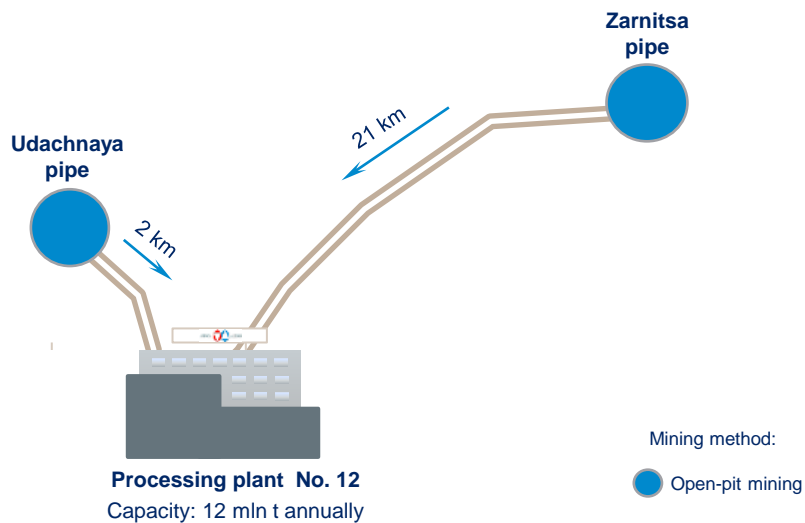


Division structure

Processing plant No. 12

- 📍 Udachnaya pipe
- 📍 Zarnitsa pipe

Share in 2012 ALROSA production:
17%



2012 Results

Ore processed ('000 t)	Diamonds produced ('000 cts)
4,619	5,845



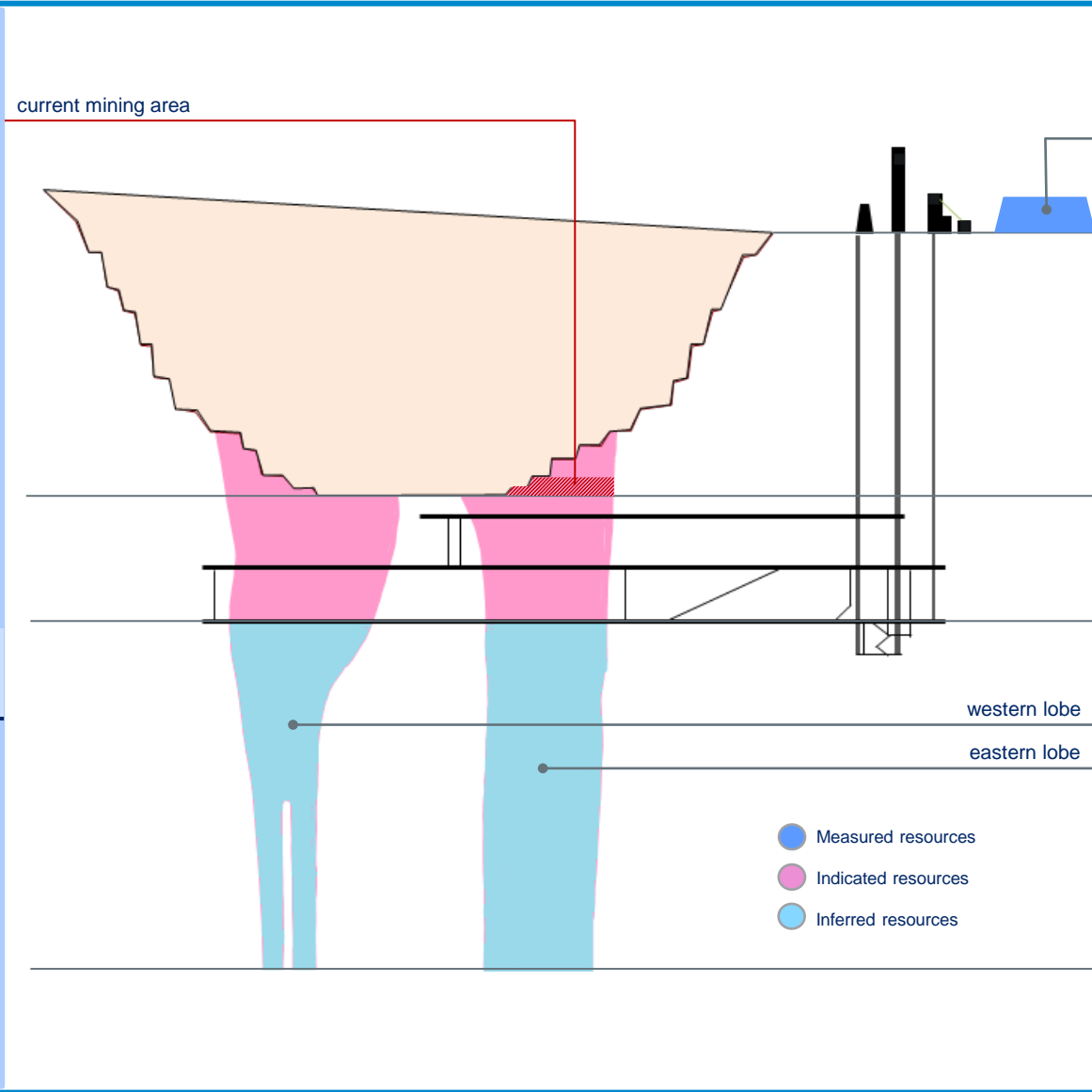
Udachnaya pipe

Mining method:
Open-pit mining

Commissioned:
1971

Current open pit depth:
630 m

Resources inclusive of reserves
 (as of 01.01.2012)
 according to JORC Code



Ore stockpile
 (measured resources)

0 m
 surface

-630 m
 current open pit depth

-890 m
 boundary of indicated resources

-1,390 m
 boundary of inferred resources

Tonnage ('000 t)	Grade (cpt)	Contained diamonds ('000 cts)
	Measured	
5,569	1.69	9,393
	Indicated	
101,566	1.28	129,915
	Inferred	
78,305	0.85	66,925
	Total	
185,440	1.11	206,233

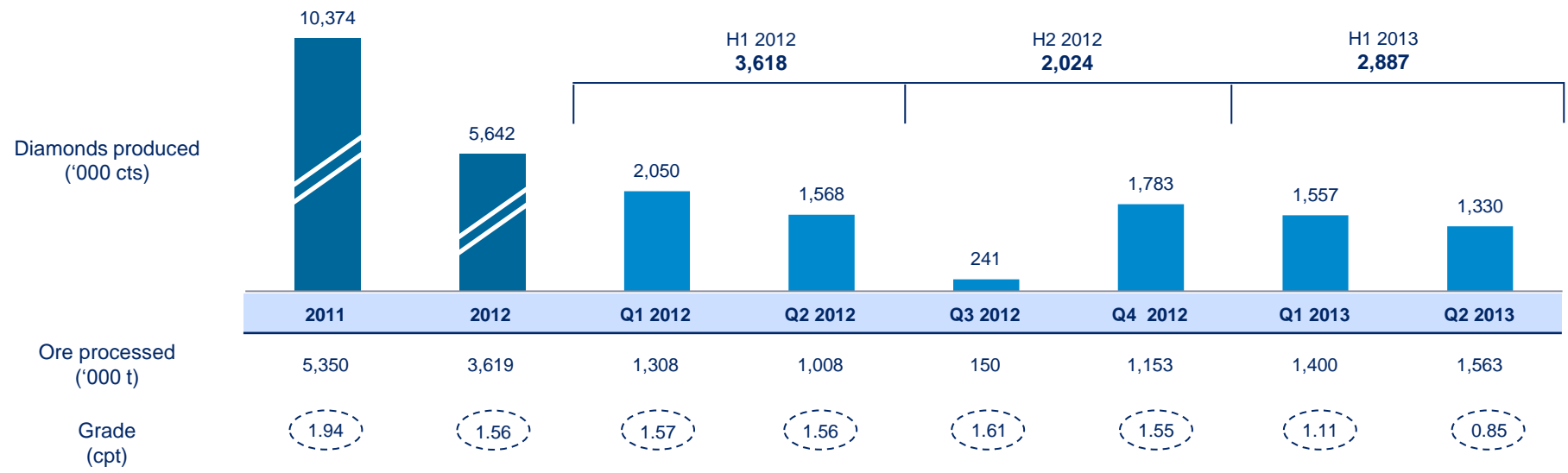


Udachnaya pipe: production overview

Share in 2012 ALROSA production:
16%

Q2 2013 diamond production decreased by 15% compared with Q2 2012

Diamond production decreased in Q2 2013 due to planned ore mining from eastern ore body with lower grade





Zarnitsa pipe

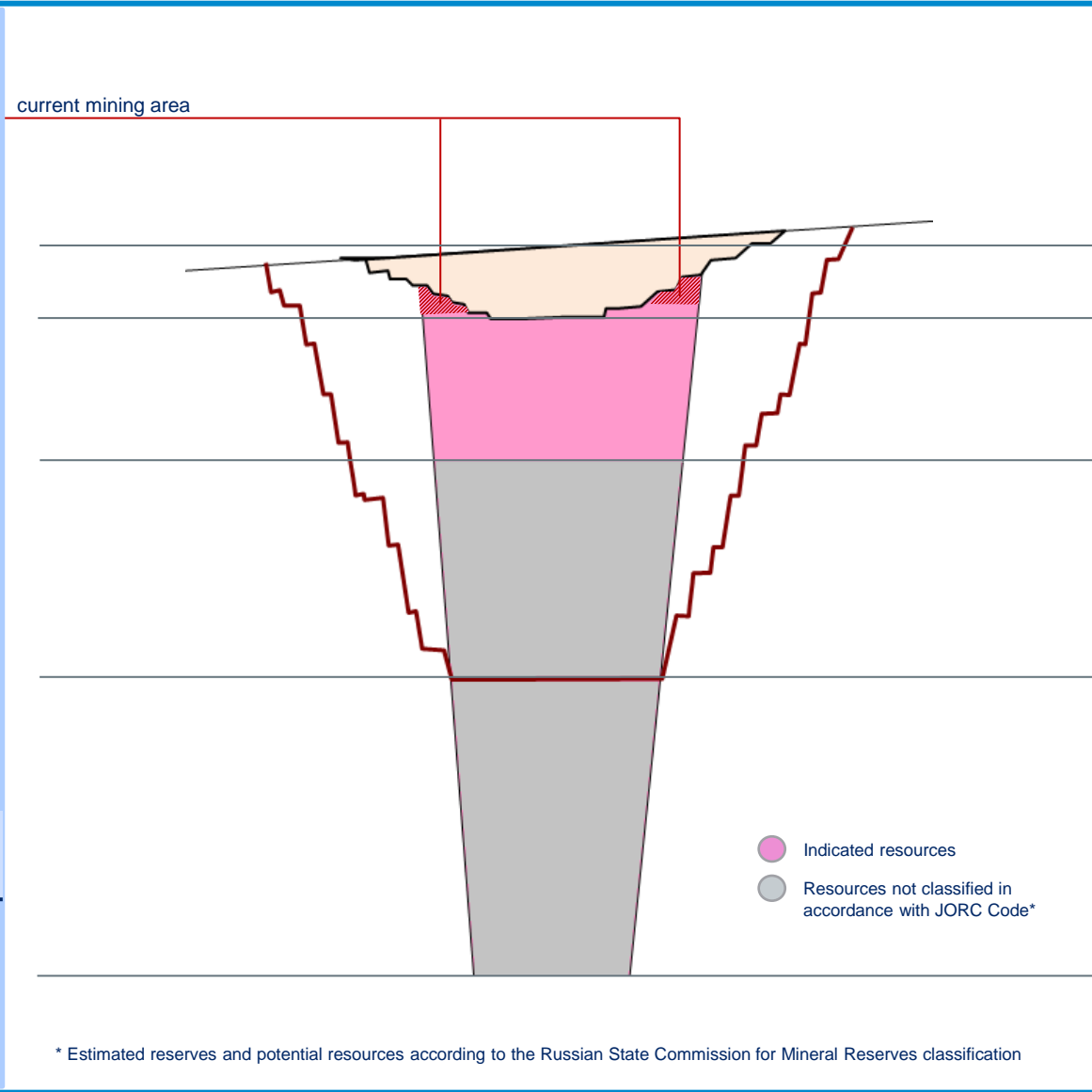
Mining method:
Open-pit mining

Commissioned:
1999

Current open pit depth:
90 m

Resources inclusive of reserves
(as of 01.01.2012)
according to JORC Code

Tonnage ('000 t)	Grade (cpt)	Contained diamonds ('000 cts)
	Indicated	
60,156	0.20	12,320
	Total	
60,156	0.20	12,320



0 m surface

-90 m current open pit depth

-200 m boundary of indicated resources

-400 m target open pit depth

-700 m boundary of exploration

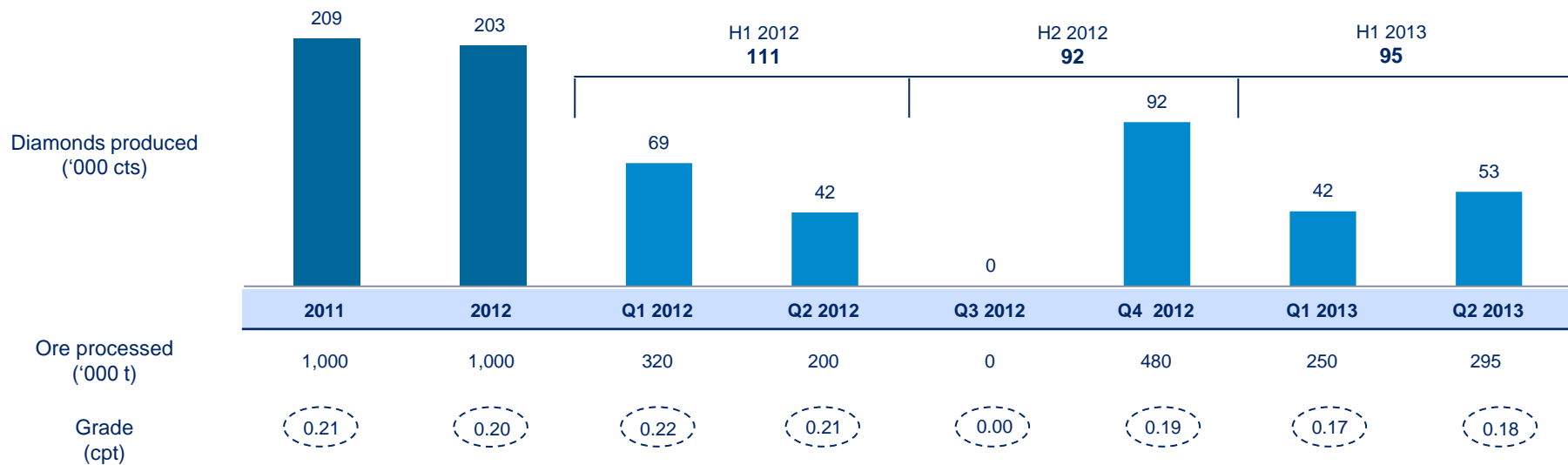


Zarnitsa pipe: production overview

Share in 2012 ALROSA production:
less than 1%

Q2 2013 diamond production increased by 26% compared with Q2 2012

Diamond production increased in Q2 2013 due to planned increase tonnes processed by 48%





NYURBA DIVISION

Nyurba Division overview



Division structure

Processing plant No. 15

- Nyurbinskaya placer
- Botuobinskaya placer*

Processing plant No. 16

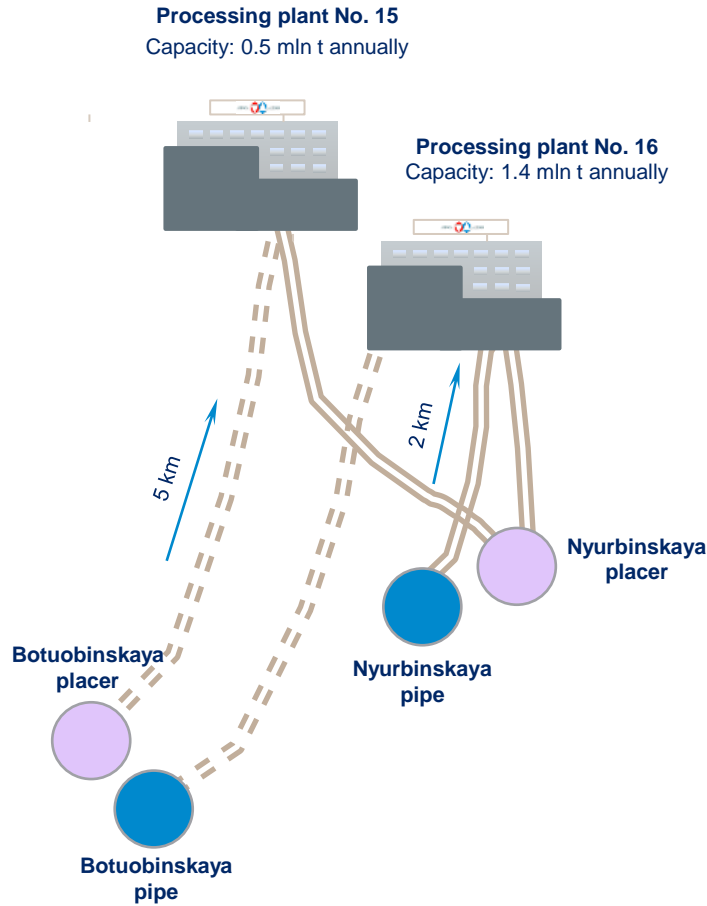
- Nyurbinskaya pipe
- Botuobinskaya pipe*
- Nyurbinskaya placer

* Pre-construction activities and waste stripping are in progress

Share in 2012 ALROSA production:
23%

2012 Results

Ore processed ('000 t)	Diamonds produced ('000 cts)
2,105	7,956



- Mining method:
- Underground mining
 - Open-pit mining
 - Alluvial mining



Nyurbinskaya pipe

Mining method:
Open-pit mining

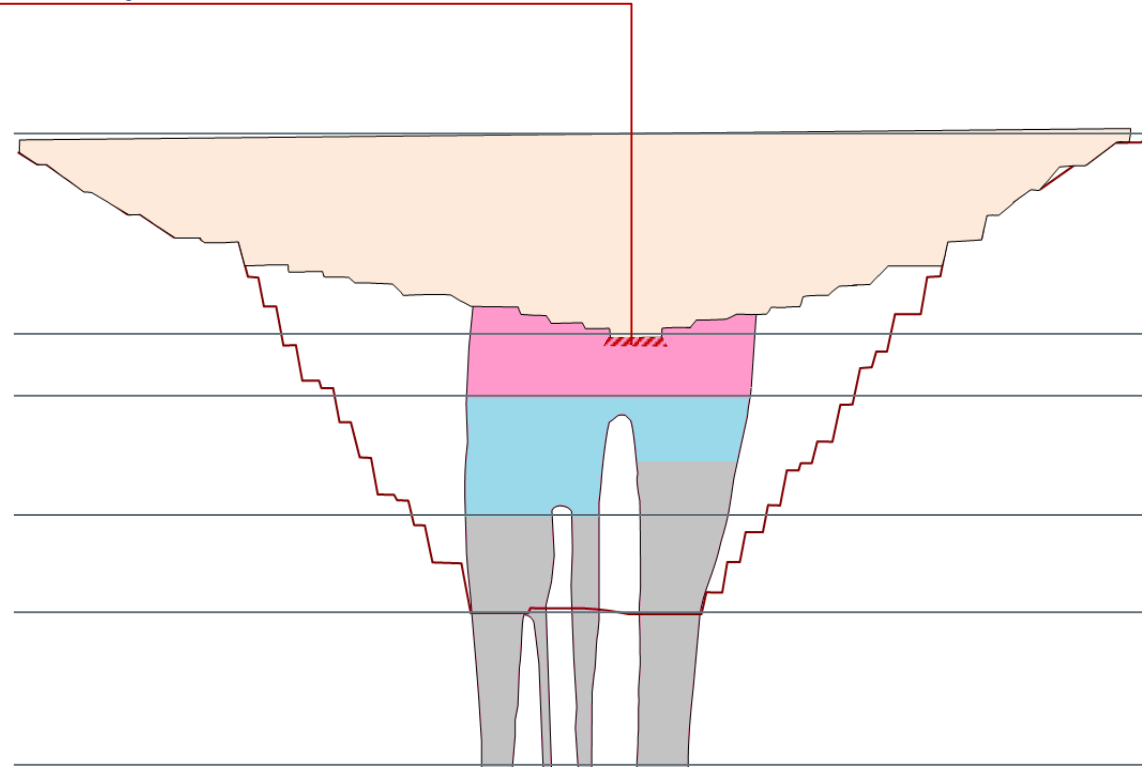
Commissioned:
2001

Current open pit depth:
255 m

Resources inclusive of reserves
(as of 01.01.2012)
according to JORC Code

Tonnage ('000 t)	Grade (cpt)	Contained diamonds ('000 cts)
	Indicated	●
6,263	4.02	25,187
	Inferred	●
8,773	5.97	52,345
	Total	
15,036	5.16	77,532

current mining area



0 m
surface

-255 m
current open pit depth

-305 m
level of indicated resources

-450 m
boundary of inferred resources

-570 m
target open pit depth

-750 m
boundary of exploration

- Indicated resources
- Inferred resources
- Resources not classified in accordance with JORC Code*

* Potential resources according to the Russian State Commission for Mineral Reserves classification

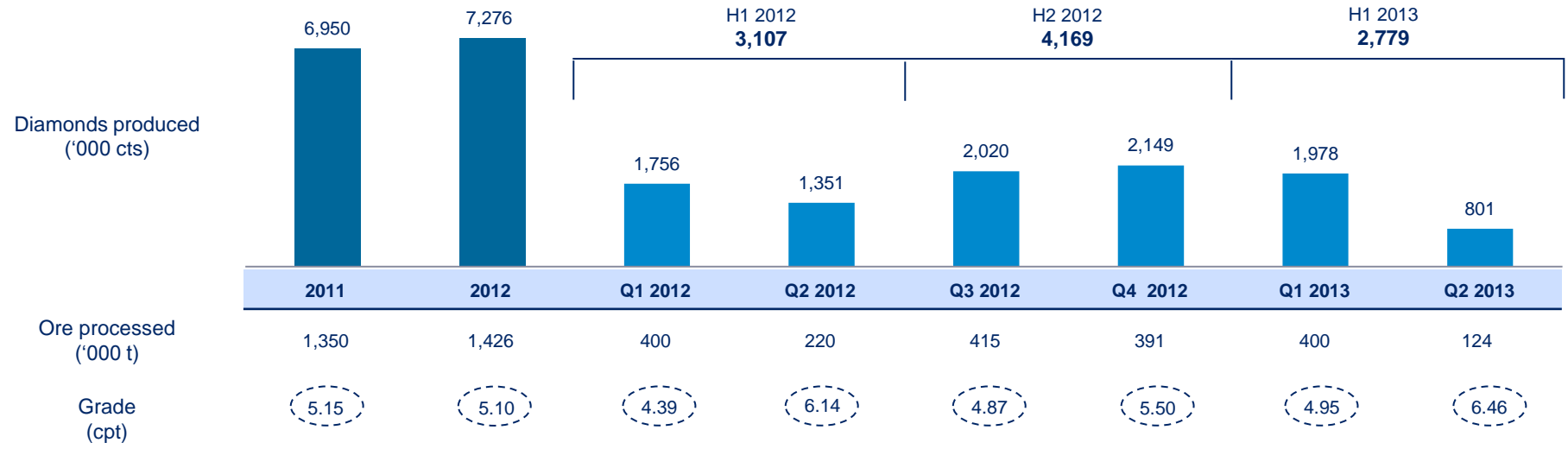


Nyurbinskaya pipe: production overview

Share in 2012 ALROSA production:
21%

Q2 2013 diamond production decreased by 41% compared with Q2 2012

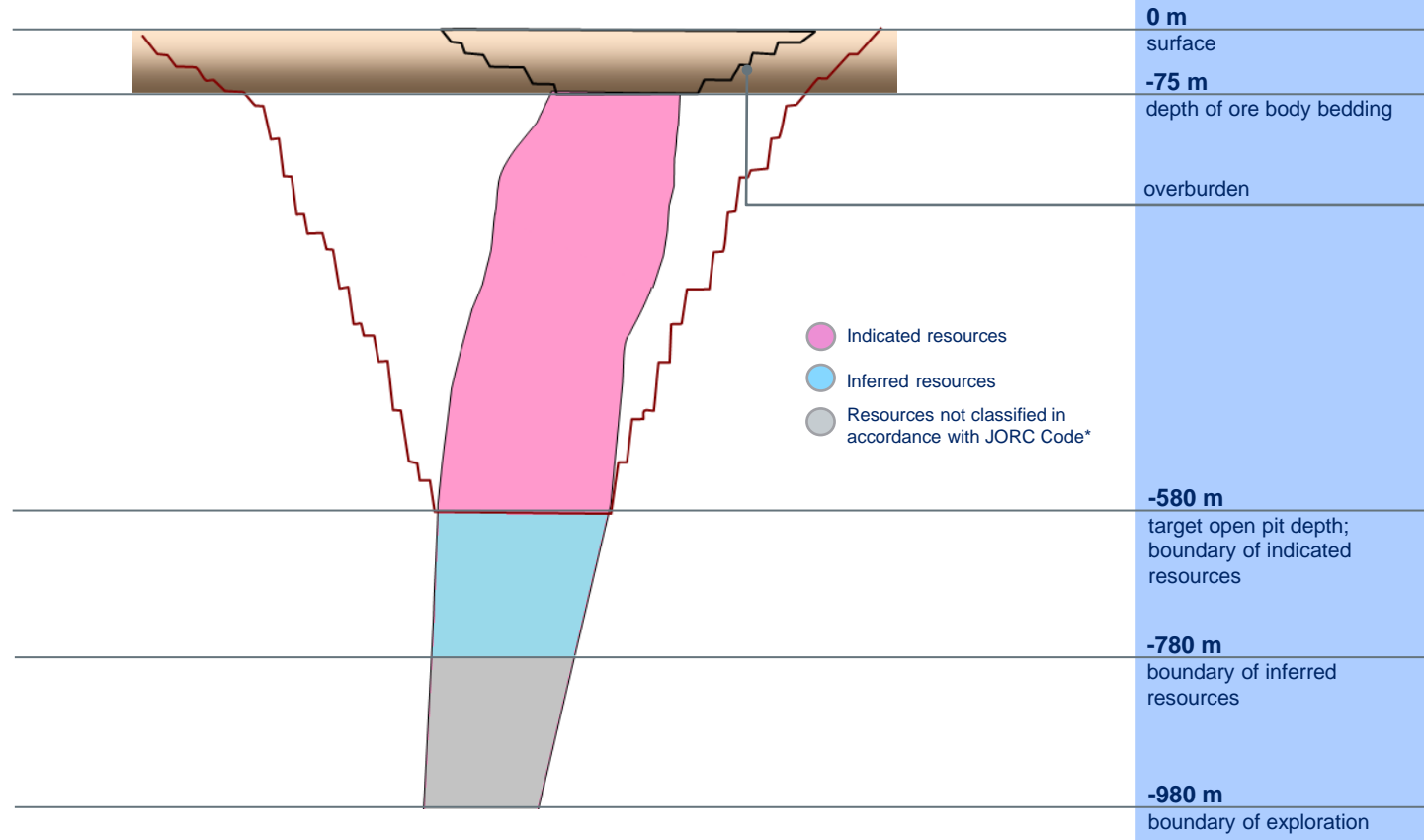
Diamond production decreased in Q2 2013 due to lower volumes of processed ore caused by grown gravels involvement into processing





Botuobinskaya pipe

Commence of waste stripping:
December 2012



Resources inclusive of reserves
(as of 01.01.2012)
according to JORC Code

Tonnage ('000 t)	Grade (cpt)	Contained diamonds ('000 cts)
	Indicated	
13,679	5.19	71,044
	Inferred	
2,685	5.14	13,790
	Total	
16,364	5.18	84,834

* Potential resources according to the Russian State Commission for Mineral Reserves classification



Alluvial deposits

Deposits

- Nyurbinskaya placer
- Botuobinskaya placer

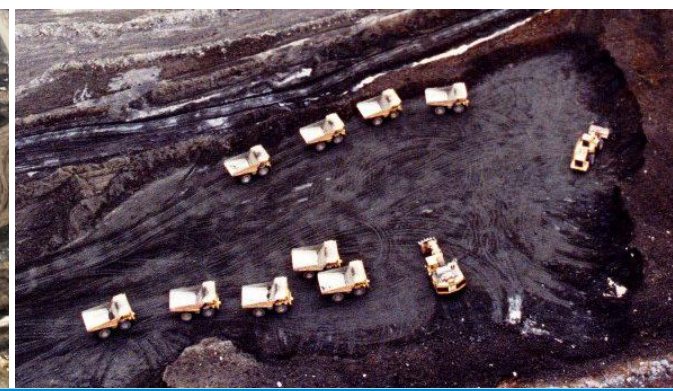
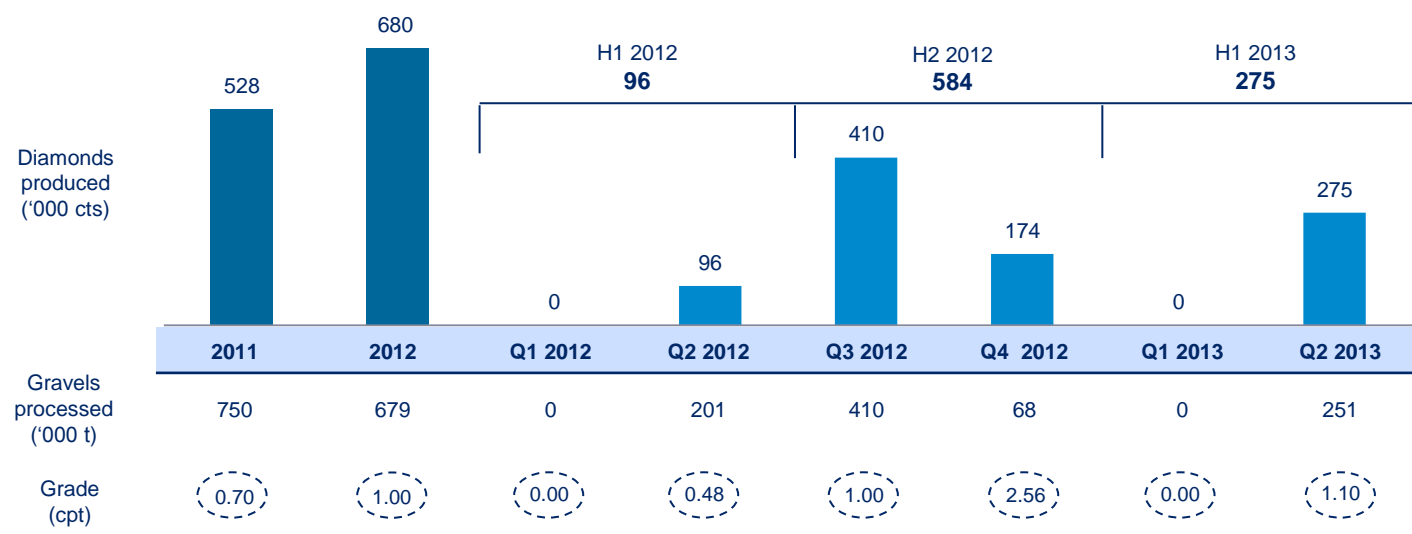
Share in 2012 ALROSA production:
2%

2012 Results

Gravels processed ('000 t)	Grade (cpt)	Diamonds produced ('000 cts)
679	1.00	680
Resources inclusive of reserves (as of 01.01.2012) according to JORC Code		
Tonnage ('000 t)	Grade (cpt)	Contained diamonds ('000 cts)
15,250	1.67	25,450

Q2 2013 diamond production increased by nearly 3x compared with Q2 2012

Diamond production increase in Q2 2013 was driven by increased volumes of gravels mined due to earlier start of operations and higher grades





LOMONOSOV DIVISION (SEVERALMAZ)

Lomonosov Division (Severalmaz) overview



Division structure

Processing plant No. 1*

- ▣ Arkhangelskaya pipe
- ▣ Karpinskogo-1 pipe**

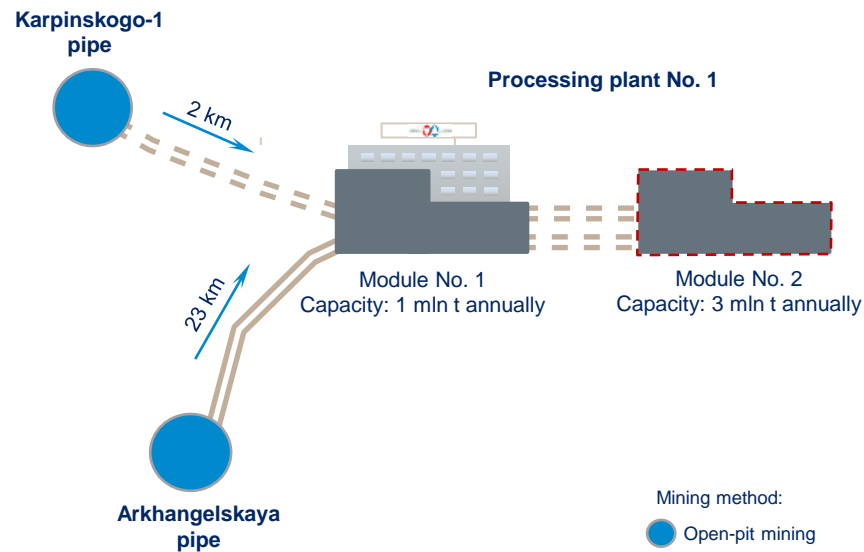
* Development in progress, construction of module No. 2

** Waste stripping in progress

Share in 2012 ALROSA production:
2%

2012 Results

Ore processed ('000 t)	Diamonds produced ('000 cts)
1,100	559





Arkhangelskaya pipe

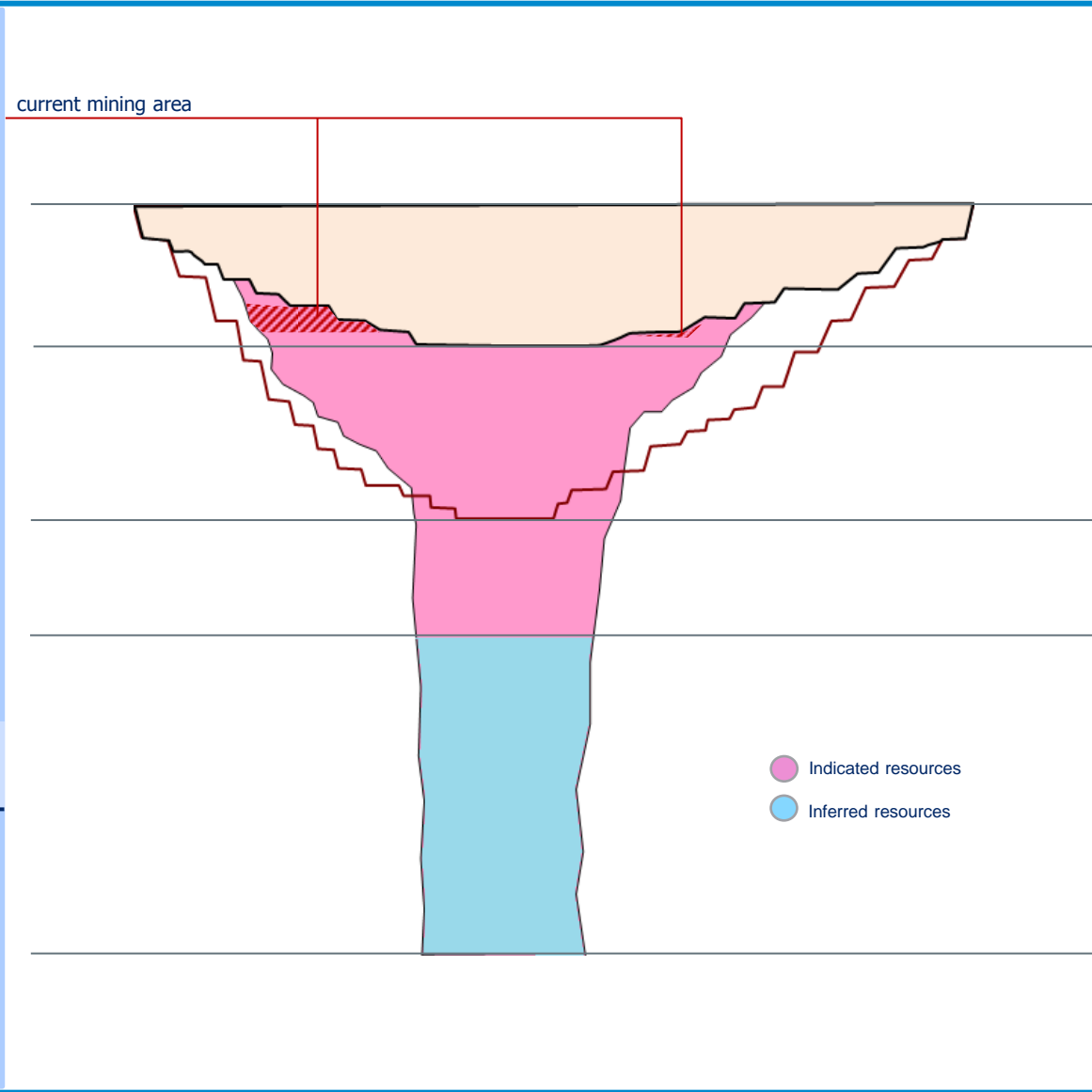
Mining method:
Open-pit mining

Commissioned:
2005

Current open pit depth:
108 m

Resources inclusive of reserves
(as of 01.01.2012)
according to JORC Code

Tonnage ('000 t)	Grade (cpt)	Contained diamonds ('000 cts)
	Indicated	
56,844	0.79	44,705
	Inferred	
39,408	0.98	38,623
	Total	
96,252	0.87	83,328



0 m surface

-108 m current open pit depth

-348 m target open pit depth

-460 m boundary of indicated resources

-940 m boundary of inferred resources

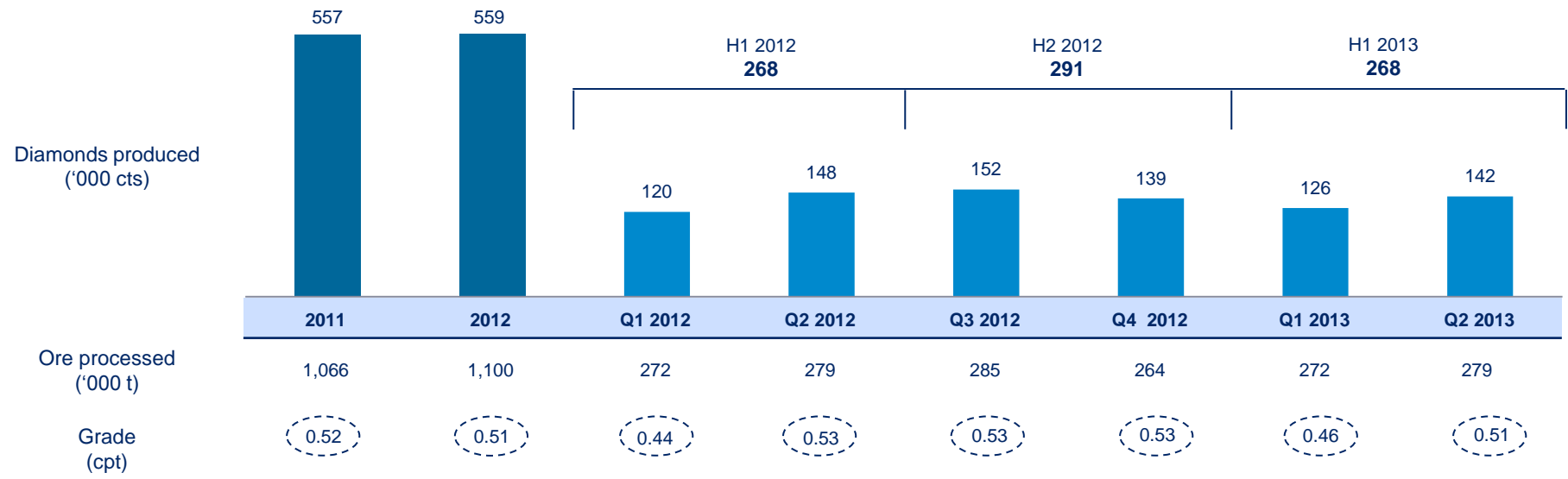


Arkhangelskaya pipe: production overview

Share in 2012 ALROSA production:
2%

Q2 2013 diamond production decreased by 4% compared with Q2 2012

Diamond production decreased in Q2 2013 due to lower grades





Karpinskogo-1 pipe



Current open pit depth:

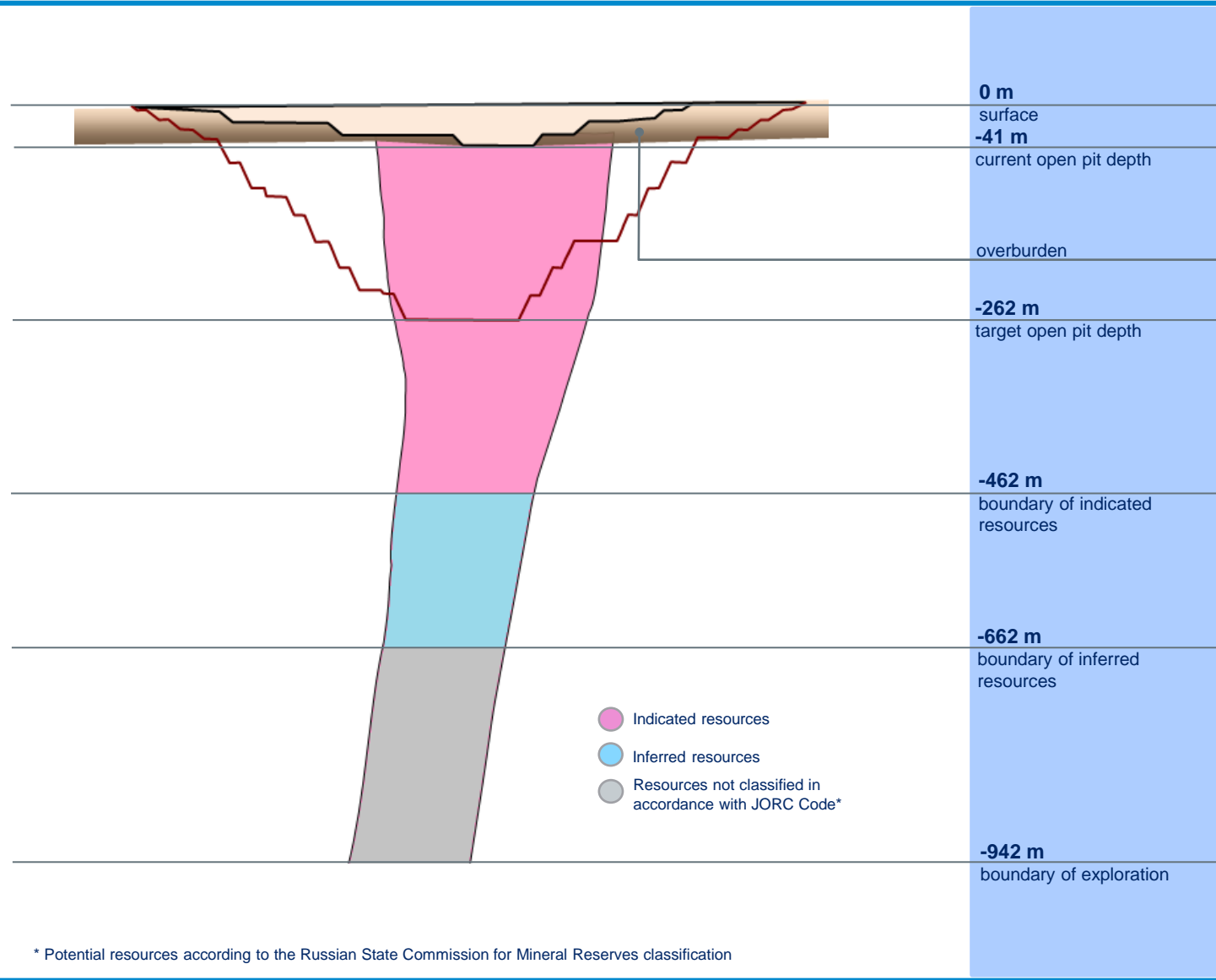
41 m

Commence of waste stripping:

2009

Resources inclusive of reserves
(as of 01.01.2012)
according to JORC Code

Tonnage ('000 t)	Grade (cpt)	Contained diamonds ('000 cts)
	Indicated	
25,436	1.01	25,584
	Inferred	
5,168	1.26	6,512
	Total	
30,604	1.05	32,096



* Potential resources according to the Russian State Commission for Mineral Reserves classification



ALMAZY ANABARA

Almazny Anabara



Deposits

- ❖ Morgogor placer
- ❖ Istok placer
- ❖ Holomolokh placer
- ❖ Ebelyakh placer
- ❖ Gusinaya placer
- ❖ 41 Ruchey placer
- ❖ Kurung-Yuryakh placer

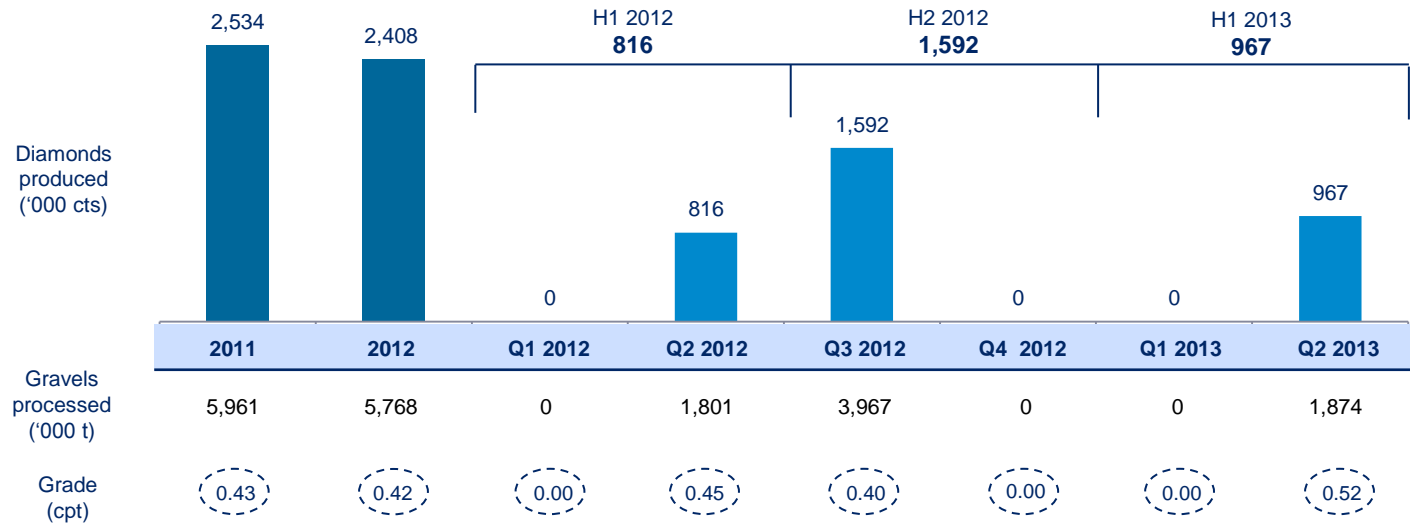
Share in 2012 ALROSA production:
7%

2012 Results

Ore processed ('000 t)	Grade (cpt)	Diamonds produced ('000 cts)
5,768	0.42	2,408
Resources inclusive of reserves (as of 01.01.2012) according to JORC Code		
Tonnage ('000 t)	Grade (cpt)	Contained diamonds ('000 cts)
45,720	0.80	36,596

Q2 2013 diamond production increased by 19% compared with Q2 2012

Diamond production increased in Q2 2013 due to higher grades and increased volumes of tonnes processed





NIZHNE-LENSKOYE

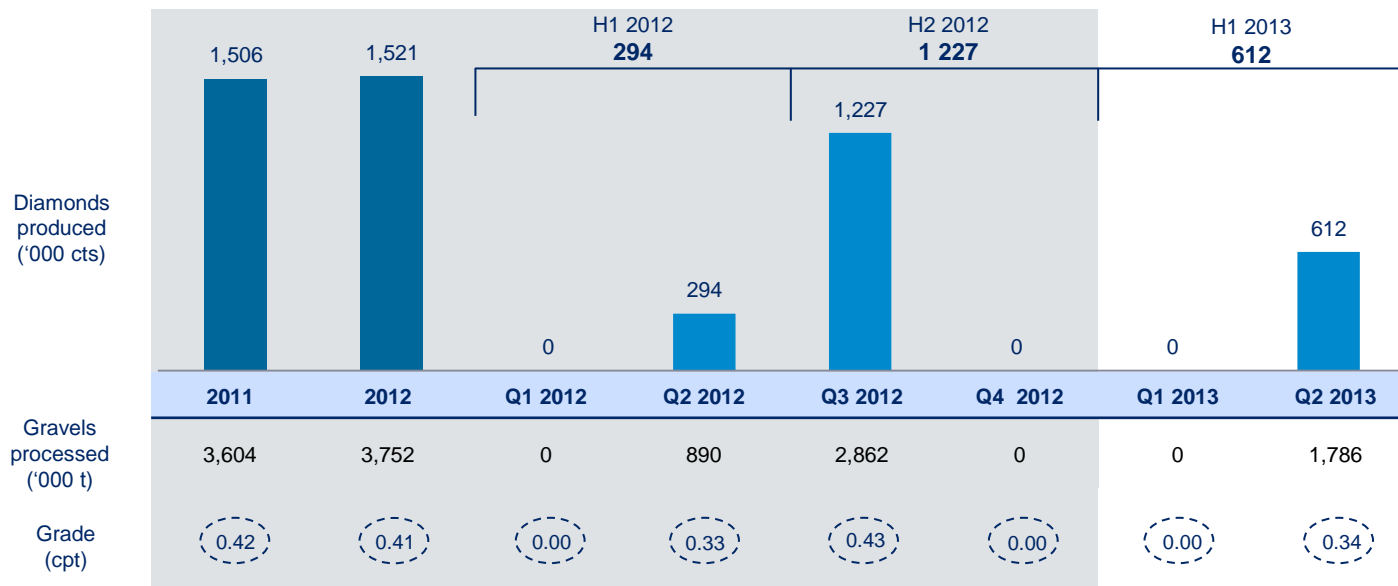
Nizhne-Lenskoye



Deposits

- ❖ Molodo placer
- ❖ Billyakh placer

- ❖ Situated in Bulunsky and Anabarsky municipal districts of the Republic of Sakha (Yakutia) close to the existing production facilities of Almazny Anabara
- ❖ Purchased in 2013 by Almazny Anabara
- ❖ Q2 2013 diamond production totaled 612 mln carats



2012 Results*

Sands processed ('000 t)	Grade (cpt)	Diamonds produced ('000 cts)
3,752	0.41	1,521

* In 2012 and earlier Nizhne-Lenskoye results are not included into ALROSA operational results





Appendix

Diamond production



'000 cts	2011	2012	Q1 2012	Q2 2012	H1 2012	Q3 2012	Q4 2012	H2 2012	Q1 2013	Q2 2013	H1 2013
Aikhal Division	5,262	8,945	1,160	2,287	3,447	2,901	2,597	5,498	1,984	3,669	5,653
Jubilee pipe	3,589	6,272	1,160	1,669	2,829	1,713	1,730	3,443	1,940	2,232	4,172
Aikhal underground mine	1,306	2,520	0	546	546	1,129	845	1,974	0	1,435	1,435
Komsomolskaya pipe	367	153	0	72	72	59	22	81	44	2	46
Mirny Division	8,138	8,707	2,933	1,959	4,892	1,770	2,045	3,816	1,792	1,778	3,570
International underground mine	5,912	5,916	2,347	1,205	3,552	1,106	1,258	2,364	1,082	1,047	2,129
Mir underground mine	1,321	1,855	504	493	997	369	489	858	471	597	1,068
Alluvial and technogenic deposits	905	936	82	261	343	295	298	593	239	134	373
Udachny Division	10,583	5,845	2,119	1,610	3,729	241	1,875	2,116	1,598	1,383	2,981
Udachnaya pipe	10,374	5,642	2,050	1,568	3,618	241	1,783	2,024	1,557	1,330	2,887
Zarnitsa pipe	209	203	69	42	111	0	92	92	42	53	95
Nyurba Division	7,478	7,956	1,756	1,447	3,203	2,430	2,323	4,753	1,978	1,076	3,054
Nyurbinskaya pipe	6,950	7,276	1,756	1,351	3,107	2,020	2,149	4,169	1,978	801	2,779
Alluvial deposits	528	680	0	96	96	410	174	584	0	275	275
Lomonosov Division (Severalmaz)	557	559	120	148	268	152	139	291	126	142	268
Arkhangelskaya pipe	557	559	120	148	268	152	139	291	126	142	268
Almazy Anabara	2,534	2,408	0	816	816	1,592	0	1,592	0	967	967
Nizhne-Lenskoye*	1,506	1,521	0	294	294	1,227	0	1,227	0	612	612
Total	34,552	34,420	8,088	8,266	16,354	9,086	8,980	18,066	7,478	9,627	17,105

* In 2012 and earlier Nizhne-Lenskoye results are not included into ALROSA operational results

Ore and sands processing



'000 t	2011	2012	Q1 2012	Q2 2012	H1 2012	Q3 2012	Q4 2012	H2 2012	Q1 2013	Q2 2013	H1 2013
Aikhal Division	11,165	10,526	2,350	2,790	5,140	2,749	2,637	5,386	2,605	2,644	5,249
Jubilee pipe	9,833	9,627	2,350	2,474	4,824	2,395	2,408	4,803	2,405	2,375	4,780
Aikhal underground mine	231	432	0	98	98	202	132	334	0	263	263
Komsomolskaya pipe	1,101	467	0	218	218	152	97	249	200	6	206
Mirny Division	3,184	5,370	523	1,426	1,949	2,048	1,373	3,421	516	1,120	1,636
International underground mine	747	711	299	133	432	124	155	279	130	118	248
Mir underground mine	339	507	127	135	262	111	134	245	144	184	328
Alluvial and technogenic deposits	2,098	4,152	97	1,158	1,255	1,813	1,084	2,897	242	818	1,060
Udachny Division	6,350	4,619	1,628	1,208	2,836	150	1,633	1,783	1,650	1,858	3,508
Udachnaya pipe	5,350	3,619	1,308	1,008	2,316	150	1,153	1,303	1,400	1,563	2,963
Zarnitsa pipe	1,000	1,000	320	200	520	0	480	480	250	295	545
Nyurba Division	2,100	2,105	400	421	821	825	459	1,284	400	375	775
Nyurbinskaya pipe	1,350	1,426	400	220	620	415	391	806	400	124	524
Alluvial deposits	750	679	0	201	201	410	68	478	0	251	251
Lomonosov Division (Severalmaz)	1,066	1,100	272	279	551	285	264	549	272	279	551
Arkhangelskaya pipe	1,066	1,100	272	279	551	285	264	549	272	279	551
Almazy Anabara	5,961	5,768	0	1,801	1,801	3,967	0	3,967	0	1,874	1,874
Nizhne-Lenskoye*	3,604	3,752	0	890	890	2,862	0	2,862	0	1,786	1,786
Total	29,826	29,488	5,173	7,925	13,098	10,024	6,366	16,390	5,443	9,936	15,379

* In 2012 and earlier Nizhne-Lenskoye results are not included into ALROSA operational results



Thank you!